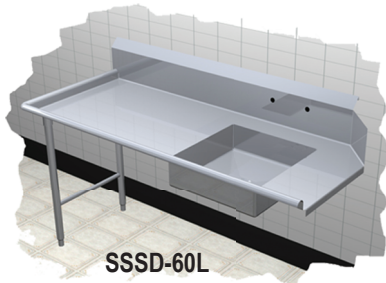




# Specifications

F.O.B Sedalia, Missouri 65301



SSSD-60L

### MODIFICATIONS:

- 12" X 15" disp. control bracket w/V.B. holes in splash - **SK-63**
- Installation of disposer collar (collar by others) - **SK-15**
- Flanged feet - **SK-19**
- Stainless steel welded leg assembly (H-frame) - units 120" and longer to have 2 - **SK-22**
- Scrap block installed - **SK-34**
- Stainless steel sink cover - **SK-13**
- Stainless steel perforated basket with welded slide rail - **SK-57**
- Stainless steel welded lengthwise crossrail - **SK-58**
- Stainless steel rack slide - **SK-59**
- 5" x 7" disp. switch bracket w/V.B holes in splash - **SK-62**
- 18 gauge stainless steel removable undershelf - **SK-18**

- |                                    |                                    |
|------------------------------------|------------------------------------|
| <input type="checkbox"/> DTUDSS-18 | <input type="checkbox"/> DTUDSS-54 |
| <input type="checkbox"/> DTUDSS-24 | <input type="checkbox"/> DTUDSS-66 |
| <input type="checkbox"/> DTUDSS-30 |                                    |
| <input type="checkbox"/> DTUDSS-42 |                                    |

### SPECIAL MODIFICATIONS

Special modification may be added. Consult Accessories and Modifications specification sheet.

### AGENCY LISTING:



**DUKE MANUFACTURING CO.**  
 2305 N. Broadway  
 St. Louis, MO 63102

800.735.3853 Toll Free  
 314.231.1130 In Missouri  
 314.231.5074 Fax  
 www.dukemfg.com

### Approval Stamp(s):

### PRODUCT INFORMATION:

PROJECT: \_\_\_\_\_

ITEM: \_\_\_\_\_

QUANTITY: \_\_\_\_\_

MODEL:

**Duke Dishtables - Straight Soil**

<u>Supreme / 14 ga</u>	<u>Deluxe / 16 ga</u>	<u>Length</u>
<input type="checkbox"/> SSSD-36 L or R	<input type="checkbox"/> DSSD-36 L or R	36" length unit
<input type="checkbox"/> SSSD-48 L or R	<input type="checkbox"/> DSSD-48 L or R	48" length unit
<input type="checkbox"/> SSSD-60 L or R	<input type="checkbox"/> DSSD-60 L or R	60" length unit
<input type="checkbox"/> SSSD-72 L or R	<input type="checkbox"/> DSSD-72 L or R	72" length unit
<input type="checkbox"/> SSSD-96 L or R	<input type="checkbox"/> DSSD-96 L or R	96" length unit
<input type="checkbox"/> SSSD-120 L or R	<input type="checkbox"/> DSSD-120 L or R	120" length unit

L - Left side of dishwasher / R - Right side of dishwasher

### Supreme - Straight - Soil - Dishtable

#### TOP:

- 14 gauge, 300 Series stainless steel
- 1-1/4" rolled rim - 2-1/2" high on front and side
- 10" rear splash - turned up 8", returned to wall
- 2" high on 45° angle with 1" turn down

#### BOWL:

- 14 gauge, 300 Series stainless steel
- 20-1/2" x 20-1/2" x 5" deep

#### UNDERBRACING:

- 12 gauge angle on 24" centers

#### LEGS:

- 16 gauge stainless steel - 1-5/8" OD tubing
- Stainless steel gusset
- 1" adjustable stainless steel bullet feet

#### CROSSRAILS:

- 16 gauge stainless steel - 1-1/4" OD tubing
- Welded to legs

### Deluxe - Straight - Soil - Dishtable

#### TOP:

- 16 gauge, 300 Series stainless steel
- 1-1/4" rolled rim - 2-1/2" high on front and side
- 10" rear splash - turned up 8", returned to wall
- 2" high on 45° angle with 1" turn down

#### BOWL:

- 16 gauge, 300 Series stainless steel
- 20-1/2" x 20-1/2" x 5" deep

#### UNDERBRACING:

- 12 gauge angle on 24" centers

#### LEGS:

- 16 gauge stainless steel - 1-5/8" OD tubing
- Stainless steel gusset
- 1" adjustable stainless steel bullet feet

#### CROSSRAILS:

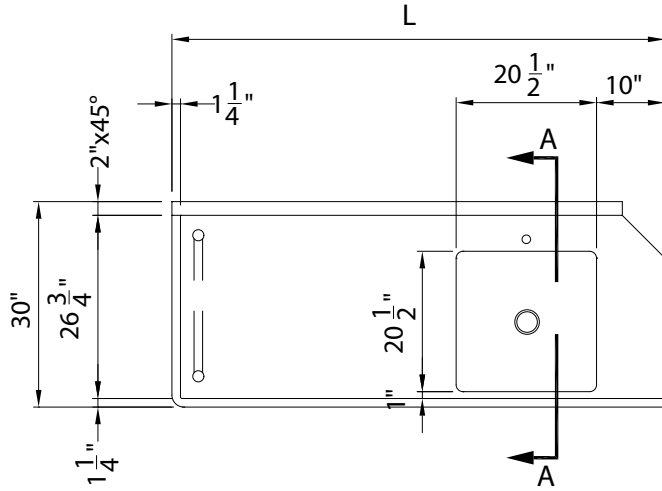
- 16 gauge stainless steel - 1-1/4" OD tubing
- Welded to legs

# Aerohot®

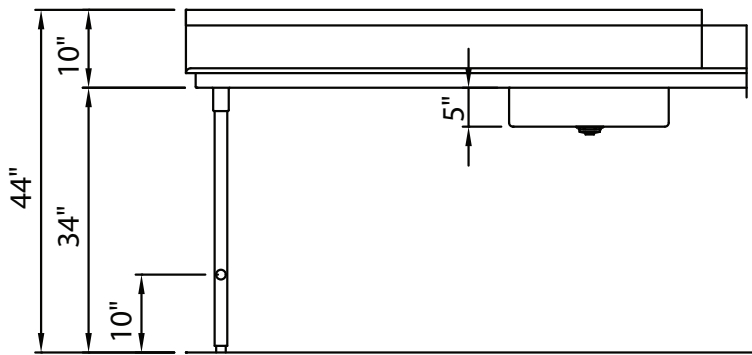
## DUKE DISHTABLES - SOIL - STRAIGHT

- | Supreme / 14 ga                          | Deluxe / 16 ga                           | Length           |
|--|--|------------------|
| <input type="checkbox"/> SSSD-36 L or R  | <input type="checkbox"/> DSSD-36 L or R  | 36" length unit  |
| <input type="checkbox"/> SSSD-48 L or R  | <input type="checkbox"/> DSSD-48 L or R  | 48" length unit  |
| <input type="checkbox"/> SSSD-60 L or R  | <input type="checkbox"/> DSSD-60 L or R  | 60" length unit  |
| <input type="checkbox"/> SSSD-72 L or R  | <input type="checkbox"/> DSSD-72 L or R  | 72" length unit  |
| <input type="checkbox"/> SSSD-96 L or R  | <input type="checkbox"/> DSSD-96 L or R  | 96" length unit  |
| <input type="checkbox"/> SSSD-120 L or R | <input type="checkbox"/> DSSD-120 L or R | 120" length unit |

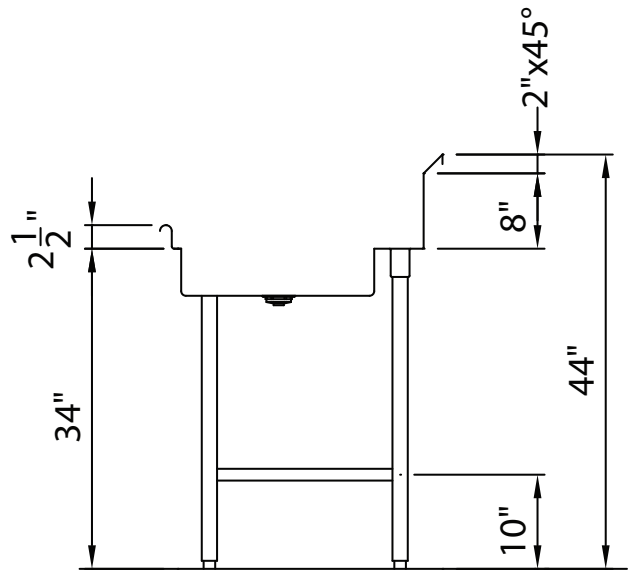
L - Left side of dishwasher / R - Right side of dishwasher



TOP VIEW



FRONT VIEW



SECTION A

**DIMENSIONS:**

Freight Class: 85

Model	"L" Size		Width (front to back)		Height		Cube ft. Crated	Weight	
	in.	cm	in.	cm	in.	cm		lbs.	kg
SSSD-36 L or R / DSSD-36 L or R	36	91.4	30	76.2	34	86.4	34.7	70	31.8
SSSD-48 L or R / DSSD-48 L or R	48	121.9	30	76.2	34	86.4	44.6	85	38.6
SSSD-60 L or R / DSSD-60 L or R	60	152.4	30	76.2	34	86.4	54.6	100	45.5
SSSD-72 L or R / DSSD-72 L or R	72	182.9	30	76.2	34	86.4	64.5	115	52.3
SSSD-96 L or R / DSSD-96 L or R	96	243.8	30	76.2	34	86.4	84.3	135	61.4
SSSD-120 L or R / DSSD-120 L or R	120	304.8	30	76.2	34	86.4	104.1	185	84.1



**DUKE MANUFACTURING CO.**  
 2305 N. Broadway  
 St. Louis, MO 63102

800.735.3853 Toll Free  
 800.231.1130 In Missouri  
 314.231.5074 Fax  
[www.dukemfg.com](http://www.dukemfg.com)

Specification subject to change