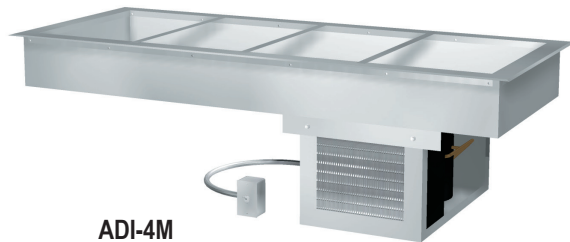




# Specifications

F.O.B Sedalia, Missouri 65301



ADI-4M

### OPTIONS:

- Condensate Evaporator - **COND-EVAP**
- 220V - 50Hz compressor
- Remote installation of unit
- Hot food style top - **HFST**
- False Bottom - **FB**
- Stainless steel louvered grille
- Glass display shelves - **98x Series**
- Buffet shelves - **83x, 93xFL, 93xHT, 93xBL**
- Serving shelves - **956/956-460 - x Series**
- Self-service canopies - **TS530-xx, TS530-xx-1SN**
- Stainless steel adapter panels - **A thru H**
- Adapter bars - **515, 516**

### AGENCY LISTING:



**DUKE MANUFACTURING CO.**  
 2305 N. Broadway  
 St. Louis, MO 63102

800.735.3853 Toll Free  
 314.231.5074 Fax  
 www.dukemfg.com

### Approval Stamp(s):

### PRODUCT INFORMATION:

PROJECT: \_\_\_\_\_  
 ITEM: \_\_\_\_\_  
 QUANTITY: \_\_\_\_\_

### MODEL:

### Drop-Ins - Cold Pan Mechanically assisted Ice - 5" Deep

- ADI-1M** (1) 5" Deep 12" x 20" pan
- ADI-2M** (2) 5" Deep 12" x 20" pan
- ADI-3M** (3) 5" Deep 12" x 20" pan
- ADI-4M** (4) 5" Deep 12" x 20" pan
- ADI-5M** (5) 5" Deep 12" x 20" pan
- ADI-6M** (6) 5" Deep 12" x 20" pan

### TOP RIM:

- Heavy gauge, 300 Series stainless steel
- 5/16" overhang on front, back and ends
- Reinforced rim
- Vinyl foam gasket as sealant
- 300 Series stainless steel cold pan liner
- Insulated all four sides and bottom
- 1" cast brass drain and plug
- Adapter bars furnished for full size pans

### REFRIGERATION:

- Copper coils attached to bottom of liner - R134A refrigerant
- Open angle-iron suspended compressor compartment
- Remote mounted on/off switch with stainless steel face plate
- 120V condensing unit
- 6' cord and plug - NEMA 5-15
- Five year warranty on compressor motor

### EXTERIOR HOUSING

- Heavy gauge paint grip steel

### SHORT FORM SPECIFICATIONS:

**Duke Drop-Ins - Cold Pan - Mechanically Assisted Ice - 5" Deep.**  
 Top rim shall be constructed of heavy gauge 300 Series stainless steel with 15/16" overhang on front, back and ends. Rim to be reinforced with heavy gauge steel angle and provided with vinyl foam gasket as sealant with top surface. Top to be cut out, flanged down and attached to heavy gauge 300 Series stainless steel interior liner, 5" deep. Liner to be 19-7/8" front to back and 6" shorter than length of top. Insulated on all four sides and bottom. Equipped with 1" cast brass drain and plug. Adapter bars for full size pans furnished. To be refrigerated by copper coils which are attached to bottom of stainless steel liner. Compressor compartment to have open angle-iron base to support air cooled condensing unit of adequate size. Remote mounted on/off switch and cord with plug provided. Entire unit factory tested, with five year warranty on compressor motor only. Exterior housing to be of heavy gauge steel. Cutout for remote on/off switch to be 2-3/6"W x 4-1/8"H x 2-1/2"D. Do not fully enclose compressor area. Two unrestricted openings of no less than 200 sq. in. each, are required in cabinet to insure proper cooling. ( See installation instructions.)

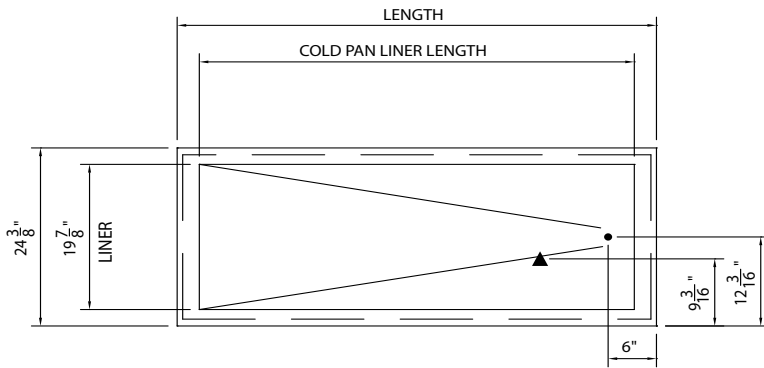


MODEL:

**Drop-Ins - Cold Pan**

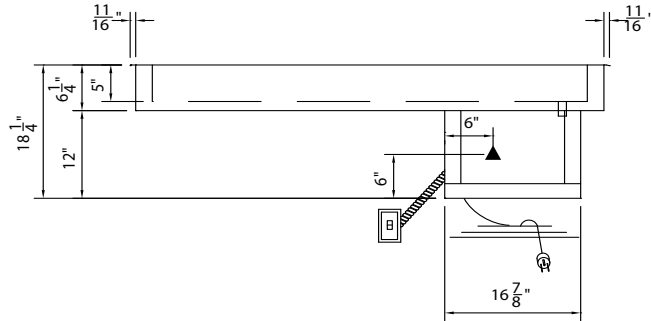
**Mechanically Assisted Ice - 5" Deep**

- ADI-1M (1) 5" Deep 12" x 20" pan
- ADI-2M (2) 5" Deep 12" x 20" pans
- ADI-3M (3) 5" Deep 12" x 20" pans
- ADI-4M (4) 5" Deep 12" x 20" pans
- ADI-5M (5) 5" Deep 12" x 20" pans
- ADI-6M (6) 5" Deep 12" x 20" pans

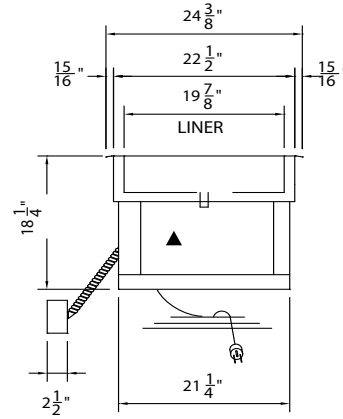


ADI-4M UNIT SHOWN

**TOP VIEW**



**FRONT VIEW**



**RIGHT SIDE VIEW**

LEGEND	
▲	- ELECTRICAL CONNECTION
●	- DRAIN CONNECTION

DIMENSIONS - Liners are 19-7/8" (50.6 cm) W; cutouts 23" (58.4cm) W

FREIGHT CLASS: 100

Model	Length		Width		Height		Cube ft crated	Adapter Bars	Weight		Cold Pan - L		Cutout - L	
	in.	cm	in.	cm	in.	cm			in.	cm	in.	cm	in.	cm
ADI-1M	18	45.7	24	61.0	18-1/4	46.4	10.2	0	150	68.2	12	30.5	17-1/2	44.5
ADI-2M	32	81.3	24	61.0	18-1/4	46.4	16.2	1	160	72.3	26	66.0	31-1/2	80.0
ADI-3M	46	116.8	24	61.0	18-1/4	46.4	22.1	2	175	90.9	40	101.6	45-1/2	115.6
ADI-4M	60	152.4	24	61.0	18-1/4	46.4	28.1	3	200	113.6	54	137.2	59-1/2	151.1
ADI-5M	74	188.0	24	61.0	18-1/4	46.4	34.0	4	230	138.6	68	172.7	73-1/2	186.7
ADI-6M	88	223.5	24	61.0	18-1/4	46.4	40.0	5	280	159.1	82	208.3	87-1/2	222.3

REMOTE CONTROL CUTOUT IS 4-1/8" H X 2-3/16" W

**ELECTRICAL SPECIFICATIONS**

Model	120 Volt	
	Amps	HP
ADI-1M	4.2	1/5
ADI-2M	4.2	1/5
ADI-3M	4.2	1/5
ADI-4M	5.2	1/4
ADI-5M	5.2	1/4
ADI-6M	5.2	1/4



**DUKE MANUFACTURING CO.**  
 2305 N. Broadway  
 St. Louis, MO 63102

800.735.3853 Toll Free  
 800.231.1130 In Missouri  
 314.231.5074 Fax  
 www.dukemfg.com

Specification subject to change