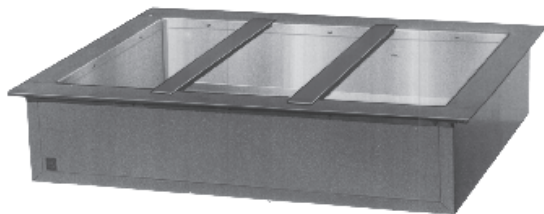




Specifications

F.O.B Sedalia, Missouri 65301



OPTIONS:

- Sectional False Bottom - FB
- Hot food style top - HFST
- Adapter panels - A thru H
- Glass display shelves - 98x Series
- Serving shelves - 956/956-460 - x Series
- Buffet shelves - 83x, 93xFL, 93xHT, 93xBL
- Self-service canopies - TS530-xx, TS530-xx-1SN
- Adapter bars - 515, 516

AGENCY LISTING:



DUKE MANUFACTURING CO.
2305 N. Broadway
St. Louis, MO 63102

800.735.3853 Toll Free
314.231.5074 Fax
www.dukemfg.com

Approval Stamp(s):

PRODUCT INFORMATION:

PROJECT: _____

ITEM: _____

QUANTITY: _____

MODEL:

Drop-Ins - Cold Pan

Mechanically assisted Ice - 5" Deep

- ADI-1I (1) 5" Deep 12" x 20" pan
- ADI-2I (2) 5" Deep 12" x 20" pans
- ADI-3I (3) 5" Deep 12" x 20" pans
- ADI-4I (4) 5" Deep 12" x 20" pans
- ADI-5I (5) 5" Deep 12" x 20" pans
- ADI-6I (6) 5" Deep 12" x 20" pans

TOP RIM:

- Heavy gauge, 300 Series stainless steel
- 5/16" overhang on front, back and ends
- Reinforced with heavy gauge steel angle
- Vinyl foam gasket as sealant

LINER:

- 300 Series stainless steel cold pan
- 5" deep, 19-7/8" front to back
- 1" cast brass drain and plug
- Adapter bars for full size pans included

EXTERIOR HOUSING

- Heavy gauge paint grip steel

SHORT FORM SPECIFICATIONS:

Duke Drop-Ins - Cold Pan - Ice Cooled - 5" Deep. Top rim shall be constructed of heavy gauge 300 Series stainless steel with 15/16" overhang on all four sides. Rim to be reinforced with heavy gauge steel angle and provided with vinyl foam gasket as sealant with top surface. Top of unit to be cut out, flanged down and attached to heavy gauge 300 Series stainless steel interior liner, 5" deep. Liner to be 19-7/8" front to back and 6" shorter than length of top. Insulated on all four sides and bottom. Equipped with 1" cast brass drain and plug. Unit shall be furnished with adapter bars for full size pans. Exterior housing of unit to be constructed of heavy gauge steel.

DROP-IN - COLD PAN - ICE COOLED - 5" DEEP

Catalog No. ADI-ICES

A.I.A. File No. 35-C-13

ADI-08



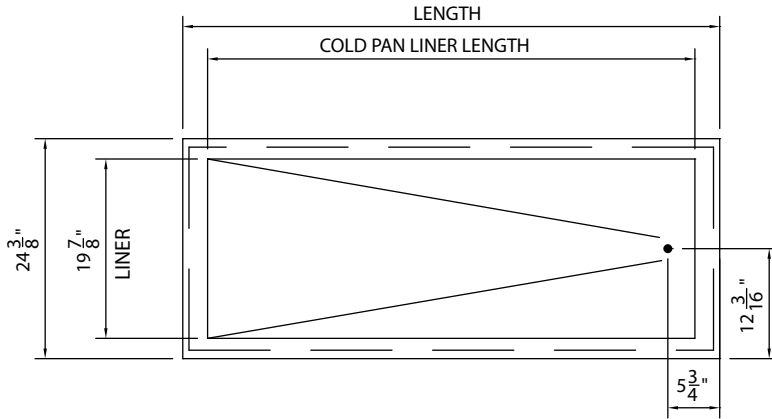
MODEL:

Drop-Ins - Cold Pan

Mechanically Assisted Ice - 5" Deep

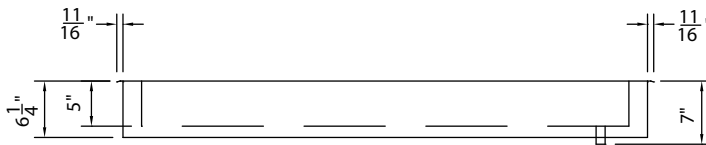
- ADI-11 (1) 5" Deep 12" x 20" pan
- ADI-21 (2) 5" Deep 12" x 20" pans
- ADI-31 (3) 5" Deep 12" x 20" pans
- ADI-41 (4) 5" Deep 12" x 20" pans
- ADI-51 (5) 5" Deep 12" x 20" pans
- ADI-61 (6) 5" Deep 12" x 20" pans

| LEGEND | |
|--------|----------------|
| ● | DRAIN LOCATION |

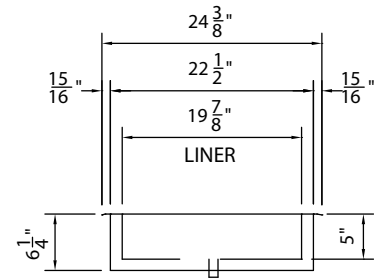


ADI-41 UNIT SHOWN

TOP VIEW



FRONT VIEW



RIGHT SIDE VIEW

DIMENSIONS - Liners are 19-7/8" (50.6 cm) W; cutouts 23" (58.4cm) W

FREIGHT CLASS: 100

| Model | Length | | Width | | Height | | Cube ft crated | Adapter Bars | Weight | | Cold Pan - L | | Cutout - L | |
|--------|--------|-------|-------|------|--------|------|----------------|--------------|--------|-------|--------------|-------|------------|-------|
| | in. | cm | in | cm | in | cm | | | in. | cm | in. | cm | in. | cm |
| ADI-11 | 18 | 45.7 | 24 | 61.0 | 6-1/4 | 15.9 | 5.6 | 0 | 70 | 31.8 | 12 | 30.5 | 17-1/2 | 44.5 |
| ADI-21 | 32 | 81.3 | 24 | 61.0 | 6-1/4 | 15.9 | 8.8 | 1 | 95 | 43.2 | 26 | 66.0 | 31-1/2 | 80.0 |
| ADI-31 | 46 | 116.8 | 24 | 61.0 | 6-1/4 | 15.9 | 12.0 | 2 | 130 | 59.1 | 40 | 101.6 | 45-1/2 | 115.6 |
| ADI-41 | 60 | 152.4 | 24 | 61.0 | 6-1/4 | 15.9 | 15.2 | 3 | 175 | 79.6 | 54 | 137.2 | 59-1/2 | 151.1 |
| ADI-51 | 74 | 188.0 | 24 | 61.0 | 6-1/4 | 15.9 | 18.5 | 4 | 220 | 100.0 | 68 | 172.7 | 73-1/2 | 186.7 |
| ADI-61 | 88 | 223.5 | 24 | 61.0 | 6-1/4 | 15.9 | 21.7 | 5 | 260 | 118.2 | 82 | 208.3 | 87-1/2 | 222.3 |

REMOTE CONTROL CUTOUT IS 4-1/8" H X 2-3/16" W



DUKE MANUFACTURING CO.

2305 N. Broadway
St. Louis, MO 63102

800.735.3853 Toll Free
800.231.1130 In Missouri
314.231.5074 Fax
www.dukemfg.com

Specification subject to change