



# Specifications

F.O.B Sedalia, Missouri 65301



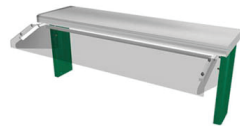
Deluxe Serving Shelf -  
956-460-x



Deluxe Glass Display  
Shelf - 98x



Deluxe Buffet Shelf -  
83x/93x



Self-Service Canopies  
TS530-xx

TS530-xx Canopies NOT AVAILABLE ON DROP-IN & SLIDE  
IN SLIMLINE ELECTRIC HOT FOOD UNITS

### OPTIONS:

- Fluorescent Lights (FL)
- Bullet-type heat lamps (BL)
- Infrared Hot Rod - (HT)
- End enclosures
- Plexiglas in lieu of glass
- Stainless steel in lieu of glass
- Modify to fit slimline units

### AGENCY LISTINGS:



**DUKE MANUFACTURING CO.**  
2305 N. Broadway  
St. Louis, MO 63102

800.735.3853 Toll Free  
314-231-1130 In Missouri  
314.231.5074 Fax  
www.dukemfg.com

### Approval Stamp(s):

### PRODUCT INFORMATION:

PROJECT: \_\_\_\_\_

ITEM: \_\_\_\_\_

QUANTITY: \_\_\_\_\_

MODEL:

### Drop-Ins Shelving

- 93x Series Serving Shelf w/o Glass
- 956-460-x Series Serving Shelf w/Glass
- 98x Series Glass Display Shelf
- 83x Series Buffet Shelf w/o Lights, Heat Rods, Lamps
- 93x Series Buffet Shelf w/Lights, Heat Rods, Lamps
- TS530-xx Self-Service Canopy- Double Sided
- TS530-xx-1SN Self-Service Canopy - Single Sided

### FRAMES:

- 956-X, 98X, 83X, 93X - Heavy gauge stainless steel tube posts
- 98x - stainless steel tube frame
- TS530-xx, TS530-xx-1SN - 18 gauge satinless steel shelf, 12 powder coat paint colors to choose from

### GUARDS:

- 956-460-x - to have glass protector panels
- 98x - stainless steel tube frame
- TS530-xx, TS530-xx-1SN - 18 gauge stainless steel shelf, 12 powder coat paint colors to choose from.

### SHELF:

- 956-x, 956-460-x Series - stainless steel shelf, edges flanged down
- 98x - 1/4" glass shelves flush to frame
- 83x, 93x - stainless shelf, edges flanged down
- TX530-xx, TS530-xx-1SN - 13" stainless steel

### SHORT FORM SPECIFICATIONS:

**Duke Aerohot Steamtables - Shelving.** All shelves shall be constructed of heavy gauge stainless steel with, **956 & 956-460-X Series** and **83x Series** shelves to have edges flanged down 2" and supported on formed, 3/4" square stainless steel tubular brackets. These shelves shall be 10-1/2" wide. **956 Series** serving shelves shall extend 14" above counter top and be available with or without glass protector panel. 956 shelves will not accommodate NO. 546 Telescope Cover. Shelves may also be equipped with calrod heat rods or fluorescent lights. **83x Series** shelves shall extend 20" above counter surface. The guards are glass and will clear top by 12", permitting easy self-service of food. These shelves may also be equipped with calrod heat rods, fluorescent lights or bullet-type heat lamps. The **98x Series** of glass display shelves shall be 16" wide and have glass set in a rectangular frame made of 3/4" square stainless steel tubing. Glass to be flush with the top of the frame. Upright supports shall be formed, 3/4" square stainless steel tubular brackets. The top shelf on the **98x Series** extends 20" above counter top with bottom shelf located 8" below top shelf. Food shields to be mounted on adjustable stainless steel brackets with exposed glass edges bound in stainless steel channels. TS530/TS530-1SN Series to have flip-up acrylic guards, stainless steel tops, painted end panels, 13" stainless steel shelf. These shelves may be equipped with fluorescent lights. When shelves with lights or heat lamps are mounted to unit, unit may not be UL listed.

ADI-19

**DROP-INS - SHELVING**

- 956-x Series** Serving Shelf w/o Glass
- 956-460-x Series** Serving Shelf w/Glass
- 98x Series** Glass Display Shelf
- 83x Seires** Buffet Shelf w/o Lights, Heat Rods, Lamps
- 93x Series** Buffet shelf w/Lights, Heat Rods, Lamps
- TS530-xx** Self-Service Canopy - Double Sided
- TS530-xx-1SN** Self-Service Canopy - Single Sided

Serving Shelves

Freight Class 70

Model		Length		Width		Height		Cube ft. Crated	Weight			
W/Glass Protector	Shelf Only	in.	cm	in.	cm	in.	cm		W/Protector		Shelf Only	
									lbs.	kg	lbs.	kg
956-460-2	956-2	30-1/2	77.2	10-1/2	26.7	14	35.6	6.7	32	14.6	23	10.5
956-460-3	956-3	44-1/2	112.8	10-1/2	26.7	14	35.6	9.3	40	18.2	31	14.1
956-460-4	956-4	58-1/2	148.3	10-1/2	26.7	14	35.6	11.9	50	22.7	48	21.8
956-460-5	956-5	72-1/2	183.9	10-1/2	26.7	14	35.6	14.5	58	26.4	50	22.7
956-460-6	956-6	86-1/2	219.0	10-1/2	26.7	14	35.6	17.1	66	30.0	57	25.9

Deluxe Glass Display Shelves

Freight Class 70

Model	Length		Width		Height		Cube ft. Crated	Weight	
	in.	cm.	in.	cm	in.	cm		lbs.	kg
982	30-1/2	77.2	16	40.6	20	50.8	11.8	50	22.7
983	44-1/2	112.8	16	40.6	20	50.8	16.3	65	29.6
984	58-1/2	148.3	16	40.6	20	50.8	20.1	80	36.4
985	72-1/2	183.9	16	40.6	20	50.8	27.0	100	45.5
986	86-1/2	219.0	16	40.6	20	50.8	30.3	125	56.8

Deluxe Buffet Shelves

Freight Class 70

Model		Length		Width		Height		Cube ft. Crated	Weight			
Standard	With Extras*	in.	cm.	in.	cm	in.	cm		Standard		With Extras - approx.	
									lbs.	kg	lbs.	kg
836	936 FL, HT, BL	30-1/2	77.2	10-1/2	26.7	20	50.8	8.6	40	18.2	50	22.7
837	937 FL, HT, BL	44-1/2	112.3	10-1/2	26.7	20	50.8	11.8	48	21.8	58	26.4
838	938 FL, HT, BL	58-1/2	148.36	10-1/2	26.7	20	50.8	15.1	68	30.9	78	35.5
839	939 FL, HT, BL	72-1/2	183.9	10-1/2	26.7	20	50.8	18.4	98	44.6	108	49.1
840	940 FL, HT, BL	86-1/2	219.0	10-1/2	26.7	20	50.8	21.7	118	53.6	128	58.2

Self-Service Canopies - Shelves in lengths of 17-5/8" / 44.8 cm, 31-5/8 / 80.4 cm, 45-5/8" / 116.0 cm, 59-5/8 / 151.5 cm, 76-5/8 / 187.1 cm , 87-5/8" / 222.6 cm Freight Class 70

Model	Weight		Width		Cube crated ft.	Model	Weight		Width		Cube crated ft.	Height for all	
	in.	cm	in.	cm			lbs.	kg	in.	cm		in.	cm
TS530-18	44	20.0	30-1/4	76.8	12.2	TS530-18-1SN	15	6.8	22-3/4	57.8	9.2	18	45.7
TS530-32	50	22.7	30-1/4	76.8	19.3	TS530-32-1SN	35	15.9	22-3/4	57.8	14.6	18	45.7
TS530-46	58	26.4	30-1/4	76.8	26.3	TS530-46-1SN	42	19.1	22-3/4	57.8	19.9	18	45.7
TS530-60	78	35.5	30-1/4	76.8	33.4	TS530-60-1SN	60	27.3	22-3/4	57.8	25.3	18	45.7
TS530-74	108	49.1	30-1/4	76.8	40.5	TS530-74-1SN	88	40.0	22-3/4	57.8	30.7	18	45.7
TS530-88	128	58.2	30-1/4	76.8	47.6	TS530-88-1SN	118	53.6	22-3/4	57.8	36.0	18	45.7

**DUKE MANUFACTURING CO.**

2305 N. Broadway  
St. Louis, MO 63102

800.735.3853 Toll Free  
800.231.1130 In Missouri  
314.231.5074 Fax  
www.dukemfg.com



Specification subject to change