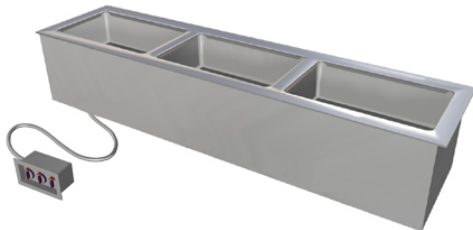




# Specifications

F.O.B Sedalia, Missouri 65301



ADI-3ESL-SW

### OPTIONS:

- 3 phase wiring (except ADI-1ESL-SW)
- Individual valves
- Mainfold drains
- Master valve
- Glass display shelves - 98x Series
- Serving shelves - 956/956-460-x Series
- Buffet shelves - 83x, 93xFL, 93xHT, 93xBL
- Telescope covers - 548, 546
- Adapter Plates - 31, 32, 33
- Adapter Bars - 513

### AGENCY LISTING:



**DUKE MANUFACTURING CO.**  
 2305 N. Broadway  
 St. Louis, MO 63102

800.735.3853 Toll Free  
 314.231.5074 Fax  
 www.dukemfg.com

### Approval Stamp(s):

#### PRODUCT INFORMATION:

PROJECT: \_\_\_\_\_

ITEM: \_\_\_\_\_

QUANTITY: \_\_\_\_\_

MODEL:

#### Drop-Ins- Slimline Hot Food - Electric

- ADI-1ESL-SW 24-1/4"L x 17-1/4"W x 12-3/4"H
- ADI-2ESL-SW 46-1/4"L x 17-1/4"W x 12-3/4"H
- ADI-3ESL-SW 68-1/4"L x 17-1/4"W x 12-3/4"H

#### TOP RIM:

- Heavy gauge, 300 Series stainless steel
- 15/16" overhang on front, back and ends
- Reinforced rim
- Vinyl foam gasket as sealant
- Die-stamped openings - 12-1/16" x 20-1/16"

#### HEAT COMPARTMENTS:

- 6-1/4" deep stainless steel liner, wet or dry operation
- Voltage/Phase/Watt
  - 120 Volt/1 Ph/750 watt element
  - 208 Volt/1 Ph/900 watt element
  - 240 Volt/1 Ph/1200 watt element
- Insulated bottom
- Individual open drains

#### CONTROL PANEL:

- Stainless steel face plate, plastic knobs
- UL approved
- Infinite switch controls in remote box

#### EXTERIOR HOUSING

- Heavy gauge paint grip steel

#### SHORT FORM SPECIFICATIONS:

**Duke Drop-In - Slimline - Hot Food - Electric - Sealed Wells.** Top rim to be constructed of heavy gauge, 300 Series stainless steel with 15/16" overhang on front, back and ends. Rim to be reinforced with heavy gauge steel angle and provided with vinyl foam gasket as sealant with top surface. Top to have die-stamped openings, each measuring 12-1/6" x 20-1/6". Heat compartments to be die-formed, 6-1/4" deep, of stainless steel and insulated on all four sides. Each compartment to have 750 watt @ at 120 volts, 900 watts @ 208 volts or 1200 watts @ 240 volts, electric element fitted under warming compartment, above insulated bottom. Unit to be wired to operate on specified, voltage, with single phase standard for hard wired in field only. Three phase available. Control panel of stainless steel. UL approved remote control designed for installation on operator's side. Infinite switch controls. Exterior to be of heavy gauge ste. Sealed well units to be furnished with cast brass drain - one for each well.

DROP-IN - SLIMLINE - HOT FOOD - ELECTRIC - SEALED WELLS

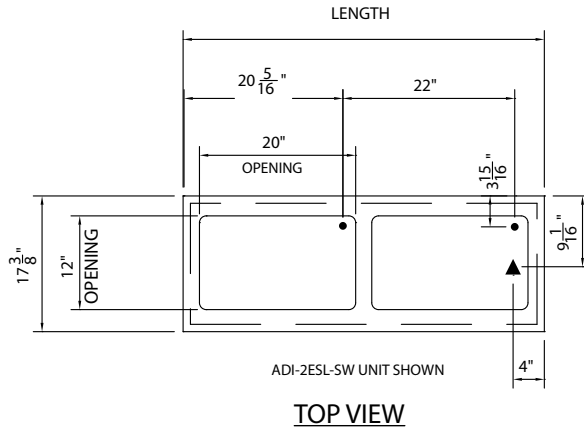
Catalog No. ADI-SLIMELECHFSW

A.I.A. File No. 35-C-13

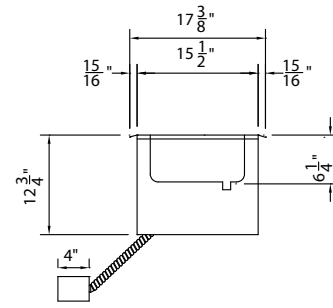
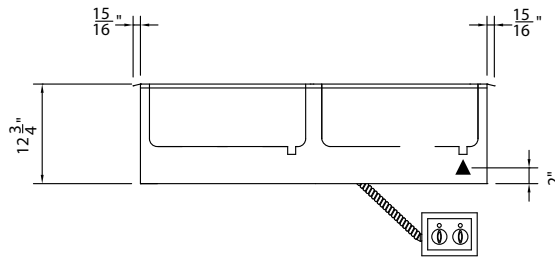


**DROP-INS - SLIMLINE  
HOT FOOD - ELECTRIC**

- ADI-1ESL-SW** 24-1/4"L x 17-1/4"W x 12-3/4"H
- ADI-2ESL-SW** 46-1/4"L x 17-1/4"W x 12-3/4"H
- ADI-3ESL-SW** 68-1/4"L x 17-1/4"W x 12-3/4"H



LEGEND	
▲	ELECTRICAL CONNECTION
●	DRAIN CONNECTION
Allow 4" gap between controls and unit	



**FRONT VIEW**

**RIGHT SIDE VIEW**

**DIMENSIONS**

FREIGHT CLASS: 100

Model	Length		Width		Height		Top Openings	Cutout Length		Cutout Width		Control Panels	Cube ft. crated	Weight	
	in.	cm	in.	cm	in.	cm		in.	cm	in.	cm			lbs.	kg.
ADI-1ESL-SW	24-1/4	61.6	17-1/4	43.8	12-3/4	32.4	1	23	58.4	16	40.6	1	7.7	80	36.4
ADI-2ESL-SW	46-1/4	117.5	17-1/4	43.8	12-3/4	32.4	2	45	114.3	16	40.6	1	13.3	135	61.4
ADI-3ESL-SW	68-1/4	173.1	17-1/4	43.8	12-3/4	32.4	3	67	170.2	16	40.6	1	19.0	185	84.1

REMOTE CONTROL CUTOUT IS 9" X 4-3/8"

ELECTRICAL SPECIFICATIONS: (Consult factory for 3-phase electrical requirements and other options)

Model	120 Volt/750 Watt		208 Volt/900 Watt		240 Volt/1200 Watt	
	watts	amps	watts	amps	watts	amps
ADI-1ESL-SW	750	6.3	900	4.3	1200	5.0
ADI-2ESL-SW	1500	12.5	1800	8.7	2400	10.0
ADI-3ESL-SW	2250	18.8	2700	13.0	3600	15.0

**DUKE MANUFACTURING CO.**  
2305 N. Broadway  
St. Louis, MO 63102



800.735.3853 Toll Free  
800.231.1130 In Missouri  
314.231.5074 Fax  
www.dukemfg.com

Specification subject to change