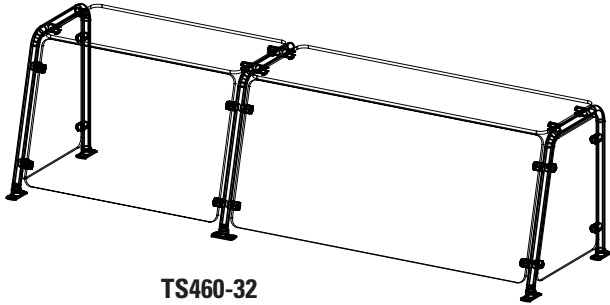




Your Solutions Partner

# Specifications

F.O.B Sedalia, Missouri 65301



TS460-32

### OPTIONS:

- Acrylic in lieu of glass
- LED lights
- Special paint colors
- Frosted Glass
- Quartz heater
- Special lengths or heights

**Approval Stamp(s):**

### PRODUCT INFORMATION:

PROJECT: \_\_\_\_\_

ITEM: \_\_\_\_\_

QUANTITY: \_\_\_\_\_

### MODEL: Foodshield - Contemporary Series

Fits: Thurmaduke, Insignia, Expressions Serving Systems

- TS460-32
  - TS460-46
  - TS460-60
  - TS460-74
  - TS460-88
- Single shelf - fixed glass, sloped guard 20" high

### TOP SHELF:

- 1/4" or 3/8" tempered glass
- Polished edges & rounded corners
- Choice of (12) powder coat paint colors:

### FRAMES:

- 1" dia. stainless steel or painted steel tube posts
- |   |  |
|---|--|
| <input type="checkbox"/> #217105 - Bright White     | <input type="checkbox"/> #217103 - Natural Almond  |
| <input type="checkbox"/> #217150 - Orange           | <input type="checkbox"/> #217154 - Racing Red      |
| <input type="checkbox"/> #217107 - Hollyberry Red   | <input type="checkbox"/> #217120 - Sky Blue        |
| <input type="checkbox"/> #217127 - Fence Green      | <input type="checkbox"/> #217152 - Stone Gray      |
| <input type="checkbox"/> #217102 - Silver Hammer    | <input type="checkbox"/> #217113 - Brown Kickplate |
| <input type="checkbox"/> #217101 - Semi-Gloss Black | <input type="checkbox"/> #217125 - Textured Black  |

### GUARDS:

- 1/4" or 3/8" tempered clear glass with polished edges and rounded corners
- Tempered glass enclosures both ends

### SIZES:

- All units available in following lengths  
31-1/4", 45-1/4", 59-1/4", 73-1/4", 87-1/4"

### Agency Listings:



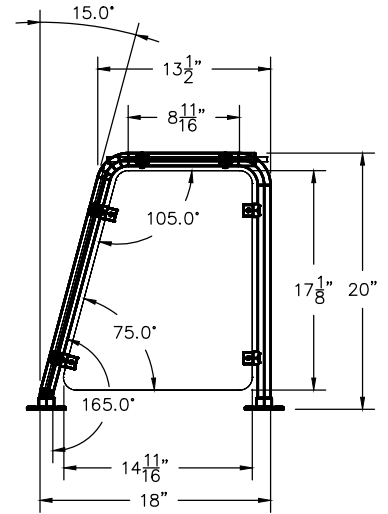
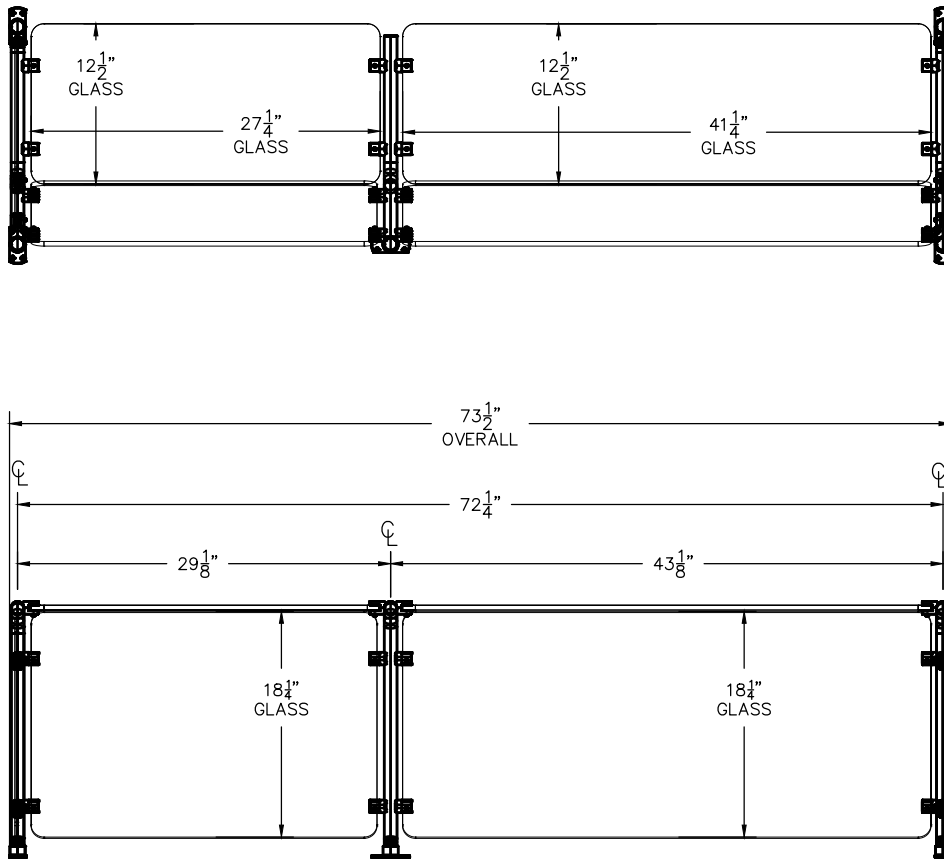
**DUKE MANUFACTURING CO.**  
 2305 N. Broadway  
 St. Louis, MO 63102

800.735.3853 Toll Free  
 314.231.5074 Fax  
 www.dukemfg.com

**FOODSHIELD - CONTEMPORARY SERIES**

- TS460-32
- TS460-46
- TS460-60
- TS460-74
- TS460-88

Single shelf & fixed glass, sloped guard 20" high



NOTE: END GLASS IS 1/4" THICK  
 1/4" GLASS (MAX SPAN 40")  
 3/8" GLASS (MAX SPAN 60")

DIMENSIONS:

Freight Class: 150

| Model    | Length |       | Height |      | Width |    | Weight |      | Cube ft. Crated |
|----------|--------|-------|--------|------|-------|----|--------|------|-----------------|
|          | in     | cm    | in.    | cm   | in.   | cm | lbs.   | kg   |                 |
| TS460-32 | 31-1/4 | 79.4  | 20     | 50.8 | 18    | 46 | 40     | 18.1 | 18              |
| TS460-46 | 45-1/4 | 114.9 | 20     | 50.8 | 18    | 46 | 48     | 21.8 | 21              |
| TS460-60 | 59-1/4 | 150.4 | 20     | 50.8 | 18    | 46 | 68     | 30.8 | 31              |
| TS460-74 | 73-1/4 | 186.1 | 20     | 50.8 | 18    | 46 | 98     | 44.5 | 45              |
| TS460-88 | 87-1/4 | 221.6 | 20     | 50.8 | 18    | 46 | 118    | 53.5 | 54              |

**DUKE MANUFACTURING CO.**

2305 N. Broadway  
 St. Louis, MO 63102

800.735.3853 Toll Free  
 800.231.1130 In Missouri  
 314.231.5074 Fax  
[www.dukemfg.com](http://www.dukemfg.com)



Specification subject to change