



Specifications

F.O.B Sedalia, Missouri 65301



HB2BC
shown with optional overhead canopy

OPTIONS:

- Overhead canopy - clear acrylic canopy, bullet lamps (2), infrared, 250 watts each, stainless steel adjustable tubing posts - **HB2BC-CCL**
- Laminate finish other than standard eight (8) finishes - **HBMODA2**
- Kickplates - **HBMODH1** (stainless)/ **HBMODH2** (painted)/ **HBMODH3** (laminate to match body)
- Three phase wiring
- Stainless steel spillage pans
- Legs in lieu of casters

AGENCY LISTING:



DUKE MANUFACTURING CO.
2305 N. Broadway
St. Louis, MO 63102

800.735.3853 Toll Free
314.231.5074 Fax
www.dukemfg.com

Approval Stamp(s):

PRODUCT INFORMATION:

PROJECT: _____
 ITEM: _____
 QUANTITY: _____

MODEL:

Heritage Buffet - Hot Food Beef Cart

- HB2BC** 32" length unit

TOP:

- Heavy gauge, 300 Series stainless steel
- Stainless steel perforated platform with "V" edge - all four sides removable - 32"L x 27-3/4"W
- Removable au jus pan
- Carving board - 10" x 14" x 1-1/8" thick, removable
- Meat spike, stainless steel, removable

BODY:

- Heavy gauge paint grip steel
- Laminate patterns:
 - Beige Grafix - **HB-01**
 - Oxide - **HB-04**
 - Fallen Leaves - **HB-07**
 - Chestnut Burl - **HB-11**
 - Stellar - **HB-03**
 - Northern Oak - **HB-06**
 - Azul Granite - **HB-13**
 - Amber Maple - **HB-12**
- Stainless steel trim strips on corners
- Flanged and channeled edges for strength
- Welded together with reinforcements
- Mounted on NSF listed 5" diameter swivel casters, two with locks, all non-marking polyurethane tires

HOT FOOD SECTION:

- Exposed element in each compartment
 - 500 watt
 - 750 watt
- Voltage/Phase
 - 120 Volt/1 Ph
 - 208 Volt/1 Ph
 - 240 Volt/1 Ph
- (2) hot food wells under platform
- Stainless steel liners, 12" x 20", insulated with fiberglass
- Individual infinite controls
- 6' cord and plug
- Spillage pans included, aluminum

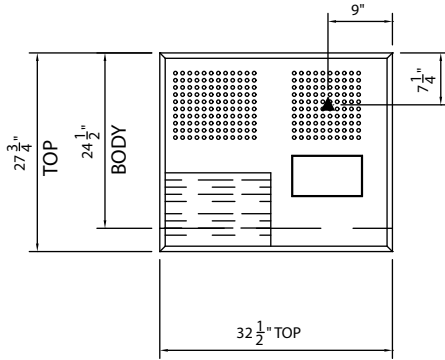
SHORT FORM SPECIFICATIONS:

Duke Heritage Buffet - Beef Cart. Top shall be heavy gauge 300 Series stainless steel with top flanged down 2" to fit flush with body on all four sides. Stainless steel perforated platform, constructed with "V:" edge on all four sides, mounted on top of unit. Platform equipped with au jus pan, carving board (10" x 14" x 1-1/8" thick) and meat spike. Body of units shall be heavy gauge paint grip steel with option of eight (8) laminate patterns. Stainless steel trim strips on corners of body panels. Optional canopy to have clear acrylic, infrared bullet lamps and adjustable stainless steel tubing posts. NSF listed caster, 5" diameter, polyurethane, swivel-type, two with locks, all non-marking tires, shall be furnished.

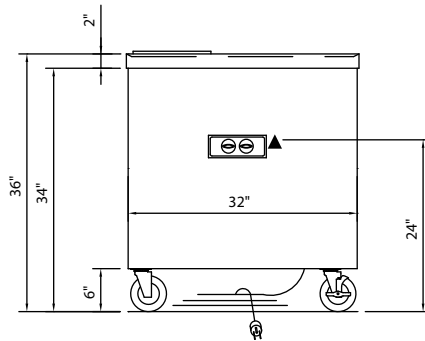
HERITAGE[®] FROM DUKE

Heritage Buffet Beef Cart

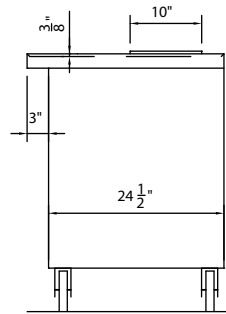
□ HB2BC 32" length unit



TOP VIEW



FRONT VIEW



RIGHT SIDE VIEW

LEGEND

▲ - ELECTRICAL CONNECTION

DIMENSIONS:

FREIGHT CLASS: 150

Model	Length		Width		Height		# Wells	Cube ft. crated	Weight	
	in.	cm	in.	cm	in.	cm			lbs.	kg
HB2BC	32	81.3	24-1/2	62.2	36	91.4	2	26.3	300	136.4

Model	Carving Area			
	Length		Width	
	in.	cm	in.	cm
HB2BC	32	81.3	27-3/4	70.5

ELECTRICAL SPECIFICATIONS:

Model	120 volt - 500 watt elements			208 volt - 750 watt elements			240 volt - 750 watt elements		
	watts	amps	NEMA	watts	amps	NEMA	watts	amps	NEMA
HB2BC w/bullet lamps	1500	12.5	5-15	2000	9.6	L14-30	2000	8.3	L14-30



DUKE MANUFACTURING CO.

2305 N. Broadway
St. Louis, MO 63102

800.735.3853 Toll Free
800.231.1130 In Missouri
314.231.5074 Fax
www.dukemfg.com

Specification subject to change