



Specifications

F.O.B Sedalia, Missouri 65301



HB2CS

(Shown w/optional trayslides and drawer)

OPTIONS:

- Stainless steel drawer - **HB306-DR**
- Internal locking device
- Cylinder lock and keys on drawer- **HB306-LK**
- Electric outlet
- 6', 8' or 10' cord and plug (specify voltage, phase and amps)
- 1-color laminate on body/second color laminate on tray slide - **HBMODA1**
- Laminate finish other than standard eight (8) finishes - **HBMODA2**
- Cutout in top
- Kickplates - **HBMODH1** (stainless) / **HBMODH2** (painted) / **HBMODH3** (laminate to match body)
- Heritage laminated trayslides
- Solid trayslides
- 3-bar trayslides
- Legs in lieu of casters

Approval Stamp(s):

PRODUCT INFORMATION:

PROJECT: _____
 ITEM: _____
 QUANTITY: _____

MODEL:

Heritage Buffet Cashier Unit

HB2CS 36"H x 26-1/2"W x 24-1/2" L

TOP:

- 16 gauge, 300 Series stainless steel
- Flanged down 2" on all four sides

BODY:

- Heavy gauge paint grip steel
- Body panels supported by 14 gauge steel frame
- Laminate patterns:

<input type="checkbox"/> Beige Grafix - HB-01	<input type="checkbox"/> Stellar - HB-03
<input type="checkbox"/> Oxide - HB-04	<input type="checkbox"/> Northern Oak - HB-06
<input type="checkbox"/> Fallen Leaves - HB-07	<input type="checkbox"/> Azul Granite - HB-13
<input type="checkbox"/> Chestnut Burl - HB-11	<input type="checkbox"/> Amber Maple - HB-12
- Stainless steel trim strips on corners
- Flanged and channeled edges for strength
- Welded together with reinforcements
- Bottom shelf - heavy gauge paint grip steel, powder coat painted black, brown or copper
- Open on end for knee room
- Mounted on NSF listed 5" diameter swivel casters, two with locks, all non-marking polyurethane tires

SHORT FORM SPECIFICATIONS:

Duke Heritage Buffet - Cashier Unit. Top shall be 16 gauge 300 Series stainless steel with top flanged down 2" on all four sides. Body shall be heavy gauge paint grip steel with option of eight (8) laminate patterns. Stainless steel trim strips on corners of body panels. Optional drawer to have stainless steel face, frame and liner. Liner to measure to 20"D x 18-7/8"W x 3-1/2"H. Unit mounted on NSF listed 5" diameter swivel casters, two with locks, all non-marking polyurethane tires.

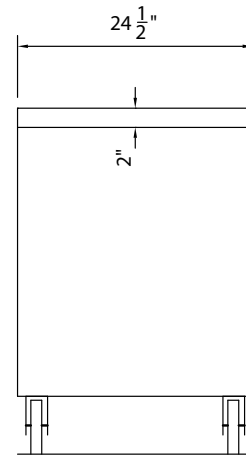
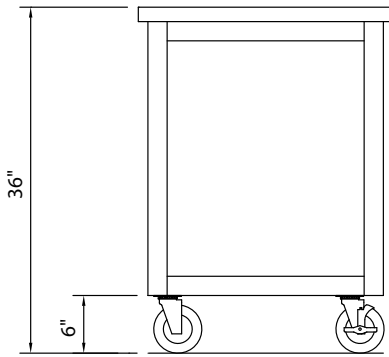
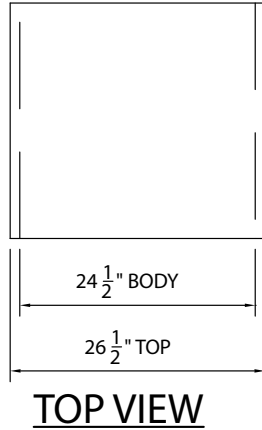
DUKE MANUFACTURING CO.
 2305 N. Broadway
 St. Louis, MO 63102

800.735.3853 Toll Free
 314.231.5074 Fax
 www.dukemfg.com

HERITAGE[®] FROM DUKE

HERITAGE BUFFET CASHIER UNIT

□ **HB2CS** 36" H x 26-1/2"W x 24-1/2"L



DIMENSIONS:

FREIGHT CLASS: 150

Model	Length		Width		Heights		Cube ft. Crated	Weight	
	in.	cm	in.	cm	in.	cm		lbs.	kg
HB2CS	26-1/2"	67.3	24-1/2"	62.2	36	91.4	21.1	250	113.6

OPTIONAL DRAWER DIMENSIONS:

Model	Depth (liner)		Width (liner)		Heights (liner)		Drawer Face Width		Drawer Face Height	
	in.	cm	in.	cm	in.	cm	in.	cm.	in.	cm.
HB2CS	20	50.8	18-7/8"	48.1	3-1/2	8.8	19-3/4"	50.2	4-1/8	10.5



DUKE MANUFACTURING CO.

2305 N. Broadway
St. Louis, MO 63102

800.735.3853 Toll Free
800.231.1130 In Missouri
314.231.5074 Fax
www.dukemfg.com

Specification subject to change