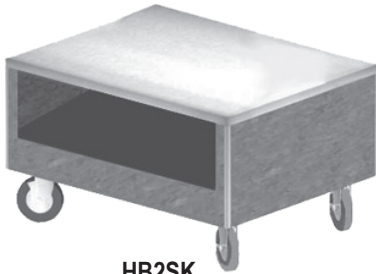




# Specifications

F.O.B Sedalia, Missouri 65301



HB2SK

### OPTIONS:

- Laminate finish other than standard eighth (8) finishes - **HBMODA2**
- Stainless steel pedestal electric outlet
- Kickplates - **HBMODH1** (stainless) /**HBMODH2** (painted) / **HBMODH3** (laminated to match body)
- Legs in lieu of casters

### OVERHEAD CANOPY

- Housing of paint grip steel with powder coat painted cap - must choose one of the following colors:
  - Black Matte - **HB-10**
  - Copper - **HB-20**
  - Brown - **HB-30**
- Clear plexiglass canopy - flips up for ease of cleaning
- Fluorescent lights in canopy
- Paint grip steel columns - rigid, powder coat paint finish

### AGENCY LISTING:



**DUKE MANUFACTURING CO.**  
 2305 N. Broadway  
 St. Louis, MO 63102

800.735.3853 Toll Free  
 314.231.5074 Fax  
 www.dukemfg.com

**Approval Stamp(s):**

### PRODUCT INFORMATION:

PROJECT: \_\_\_\_\_  
 ITEM: \_\_\_\_\_  
 QUANTITY: \_\_\_\_\_

### MODEL:

### Heritage Buffet - Soup Kettle Stand

**HB2SK** 18-3/4"H x 24-1/2"W x 32" L

### TOP:

- Heavy gauge, 300 Series stainless steel
- Flanged down 2" on all four (4) sides
- 2-3/4" diameter cutout and grommet

### BODY:

Heavy gauge paint grip steel

#### Laminate patterns:

- |   |  |
|---|--|
| <input type="checkbox"/> Beige Grafix - <b>HB-01</b>  | <input type="checkbox"/> Stellar - <b>HB-03</b>      |
| <input type="checkbox"/> Oxide - <b>HB-04</b>         | <input type="checkbox"/> Northern Oak - <b>HB-06</b> |
| <input type="checkbox"/> Fallen Leaves - <b>HB-07</b> | <input type="checkbox"/> Azul Granite - <b>HB-13</b> |
| <input type="checkbox"/> Chestnut Burl - <b>HB-11</b> | <input type="checkbox"/> Amber Maple - <b>HB-12</b>  |

- Stainless steel trim strips on corners
- Flanged and channeled edges for strength
- Welded together with reinforcements
- Bowl storage opening on one side
- 6' cord and plug
- Electric duplex outlet in base, NEMA #5-15R
- Bottom shelf powder coat painted black, brown or copper
- Mounted on NSF listed 5" diameter swivel casters, two with locks, all non-marking polyurethane tires

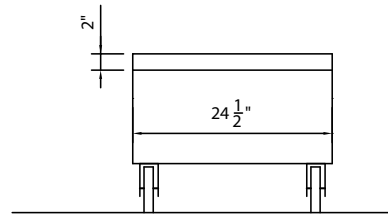
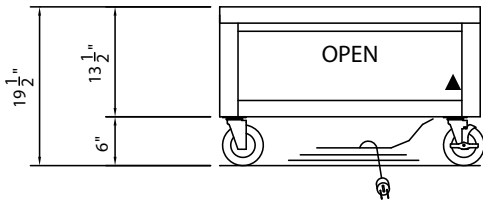
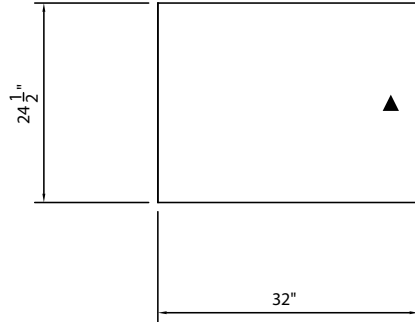
### SHORT FORM SPECIFICATIONS:

**Duke Heritage Buffet - Soup Kettle Stand.** Top shall be constructed of heavy gauge 300 Series stainless steel with edges flanged down 2" on all four sides. Body of unit shall be heavy gauge paint grip steel with option of eight (8) laminate patterns. Stainless steel trim strips on corners of body panels. Body with integrally flanged and channeled edges for rigidity and structural strength. Each body individually welded together with local reinforcements. NSF listed casters, 5" diameter, swivel-type, two with locks, all polyurethane tires, shall be furnished.

# HERITAGE<sup>®</sup> FROM DUKE

## HERITAGE BUFFET - SOUP KETTLE STAND

□ **HB2SK** 19" H x 24-1/2"W x 32"L



**DIMENSIONS:**

FREIGHT CLASS: 150

Model	Length		Width		Heights		Cube ft. Crated	Weight	
	in.	cm	in.	cm	in.	cm		lbs.	kg
HB2SK	32	81.3	24-1/2	62.2	18 3/4	49.5	16.6	135	61.4

Bowl Storage - in.		
Length	Width	Height
28	24-1/2	8-1/2

**ELECTRICAL SPECIFICATIONS** - with duplex outlet standard - 1 Phase

Model	120 Volt	
	amps	NEMA
HB2SK	15.0	5-15



**DUKE MANUFACTURING CO.**

2305 N. Broadway  
St. Louis, MO 63102

800.735.3853 Toll Free  
800.231.1130 In Missouri  
314.231.5074 Fax  
[www.dukemfg.com](http://www.dukemfg.com)

Specification subject to change