



"Your Solutions Partner"

# Specifications

F.O.B St. Louis, Missouri 63102



DBS-1

### OPTIONS:

- Stainless steel interior
- Oven racks
- Extended warranty: 2 year parts & labor

### Approval Stamp(s):

### PRODUCT INFORMATION:

PROJECT: \_\_\_\_\_

ITEM: \_\_\_\_\_

QUANTITY: \_\_\_\_\_

MODEL:

### Duke Baking Station - DBS-1

- DBS-1** 59-E3 Oven, Electric/59-BS Stand

### OVEN SECTION:

- 5 racks/9 rack positions
- Porcelain interior finish - 15-3/4W x 20"H x 21"D cavity
- Field reversible door, single hinge
- Stainless steel front, sides, top
- 1" insulation on bottom, sides, back
- 3" insulation on top

### OVEN CONTROLS:

- "XX" - Solid state digital time and temperature controls, 12-hour countdown timer, **Cook and Hold** feature, 2-speed fan, Pulse fan capability
- "ZZ" - 10 programmable menu buttons, 5-rack ID timers, computerized digital time and temperature controls, Cook and Hold feature, 2-speed fan, Pulse Fan capacity

### STAND SECTION

- Stainless steel
- Pull-out top shelf
- 15" removable side shelf
- 2 undershelves
- NSF approved swivel casters, 2 locking

### AGENCY LISTINGS:



### DUKE MANUFACTURING CO.

2305 N. Broadway  
St. Louis, MO 63102

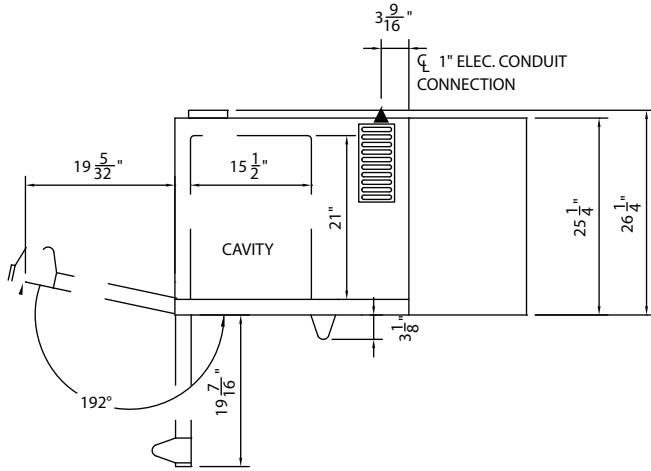
800.735.3853 Toll Free  
314-231-1130 In Missouri  
314.231.5074 Fax  
www.dukemfg.com

### SHORT FORM SPECIFICATIONS:

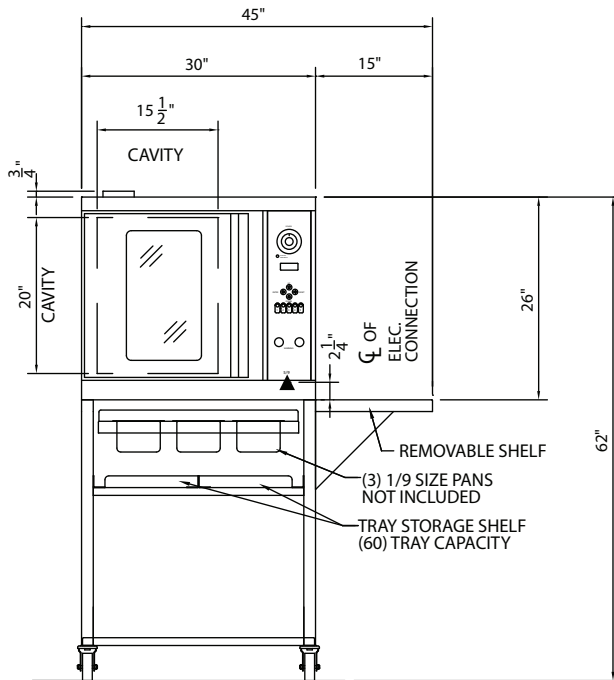
**Duke Baking Centers - DBS - 1 - 59 -E3 Oven/59-BS Stand.** Oven section shall have single stainless steel door, with glass, hinged on oiled bronze busings. Bottom, sides and back of oven shall be fully insulated with 1" thick insulation, top to have 3" thick insulation. Five racks and nine rack positions available in oven section. Two-speed, 1/2 HP blower motor in oven. 8.0 KW input. ON-OFF-COOL DOWN switch, fused to protect against overload shall be provided. Stand shall be constructed of stainless steel and consist of pull out top shelf to accommodate one 13" x 18" biscuit pan and 3 each 6" deep. 1/6 pan inserts. A removable 15" side shelf, either right or left side mounted, is included. An undershelf will accommodate up to 20 each 13" x 18" biscuit pans. A second undershelf will accommodate large containers. Stand to be mounted on NSF approved 4-1/2" diameter casters, two with locks. A 1/10 warranty consisting of 1 year parts and labor on the entire oven (excluding consumables) and an additional 10 year limited oven door warranty is standard.

**DUKE BAKING CENTER - DBC-1**

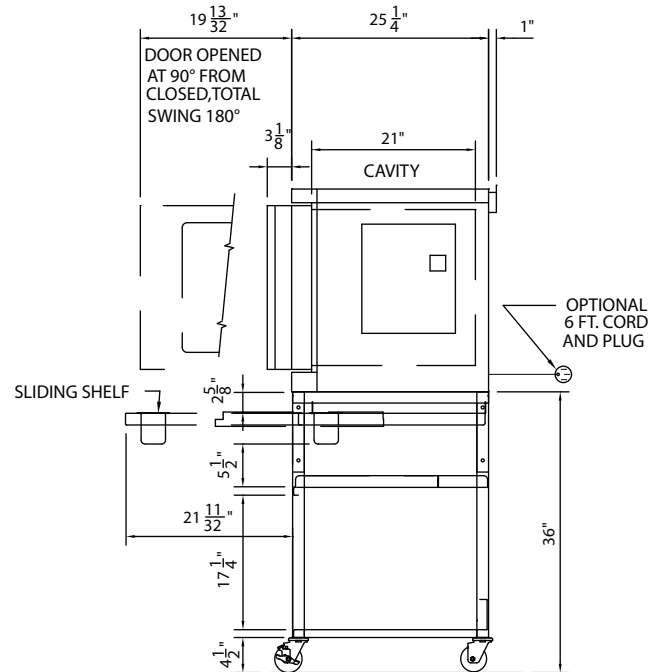
□ **DBS-1** 59-E3 Oven, Electric/59-BS Stand



**TOP VIEW**



**FRONT VIEW**



**RIGHT SIDE VIEW**

Electrical Specifications			
59-E3	208V Amps	240V Amps	KW
1 Phase	40.0	35.0	8.0
3 Phase	35.0	21.0	8.0
▲ - Electronic connection point			

DIMENSIONS:

Freight Class: 85

Model	Depth		Width		Height		Cube ft. crated	Weight	
	in	cm	in.	cm	in.	cm		lbs	kg
59-E3	25-1/4	64.1	30	76.2	26	66.0	14.2	265	120.5
59-BS	25-1/4	64.1	45	114.3	36	91.4	28.2	190	86.4



“Your Solutions Partner”

**DUKE MANUFACTURING CO.**  
2305 N. Broadway  
St. Louis, MO 63102

800.735.3853 Toll Free  
314.231.5074 Fax  
www.dukemfg.com

Specification subject to change

09/09  
Printed in U.S.A.  
© 2009, Duke Manufacturing Co.