



Your Solutions Partner

Specifications

F.O.B Sedalia, Missouri 65301



ASI-3G

OPTIONS:

- Safety pilots - **D-SP**
- Thermostats - **D-TH**
- Glass display shelves - **98x Series**
- Serving shelves - **956/956-460-x Series**
- Buffet shelves - **83x, 93xIFL, 93xHT, 93xBL**
- Self-service canopies - **TS530-xx, TS530-xx-1SN**
- Telescope covers - **548, 546**
- Hardwood carving board
- S/S carving surface - **445-S**
- S/S dish shelf - **444-S**
- S/S spillage pan - **579 & 676**
- Removable S/S carving station - **CS-2**
- Adapter Plates - **31, 32, 33**
- Drop-in style top rim

AGENCY LISTING:



DUKE MANUFACTURING CO.
2305 N. Broadway
St. Louis, MO 63102

800.735.3853 Toll Free
314.231.5074 Fax
www.dukemfg.com

Approval Stamp(s):

PRODUCT INFORMATION:

PROJECT: _____

ITEM: _____

QUANTITY: _____

MODEL:

Slide-Ins

Hot Food - Gas

- ASI-1G** 18-1/4"L x 23-1/2"W x 15-3/4"H
- ASI-2G** 32-1/4"L x 23-1/2"W x 15-3/4"H
- ASI-3G** 46-1/4"L x 23-1/2"W x 15-3/4"H
- ASI-4G** 60-1/4"L x 23-1/2"W x 15-3/4"H
- ASI-5G** 74-1/4"L x 23-1/2"W x 15-3/4"H
- ASI-6G** 88-1/4"L x 23-1/2"W x 15-3/4"H

TOP RIM:

- Heavy gauge, 300 Series stainless steel
- Die-stamped openings - 12-1/16" x 20-1/16"
- 15/16" overhang on back and ends
- Reinforced with heavy gauge steel angle
- Vinyl foam gasket as sealant
- Operator's side turn down

HEAT COMPARTMENTS:

- Die-formed 8" deep stainless steel liners - dry operation
- 1" fiberglass insulation, all four sides and bottom
- Individual burners under each well - 3500 BTU/HR input each
- Adjustable gas valve & pilot light for each burner
- Galvanized steel radiation plate each compartment
- Gas pressure regulator included
- Include 576 aluminum spillage pans

EXTERIOR HOUSING

- Heavy gauge paint grip steel on one side and both ends
- Stainless steel on operator's side

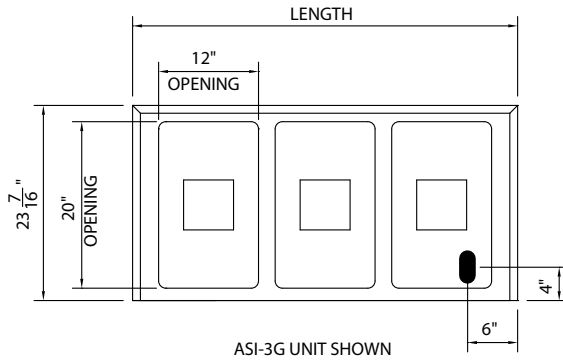
SHORT FORM SPECIFICATIONS:

Duke Slide-Ins - Hot Food - Gas. Top rim to be constructed of heavy gauge, 300 Series stainless steel with 15/16" overhang on back and ends with operator's side turned down. Rim to be reinforced with heavy gauge steel angle and provided with vinyl foam gasket as sealant with top surface. Top shall be provided with die-stamped openings, each measuring 12-1/6" x 20-1/16", with 20-1/16" measurement running front to back. Heat compartments shall have die-formed, 8" deep liners, fabricated of stainless steel and insulated on all four sides, bottom and between sections with 1" fiberglass. Each compartment to have individual burner rated at 3500 BTU's input per hour designed for use with natural or propane gas, as ordered. Each burner shall be controlled by an adjustable gas valve with adjustable pilot light. Galvanized steel radiation plate furnished in each compartment, with gas pressure regulator provided for each slide-in. Exterior housing to be constructed of heavy gauge steel, except for operator's side which shall be stainless.

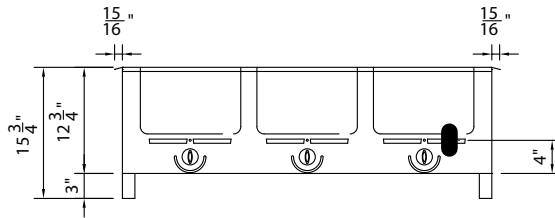


**SLIDE-INS
HOT FOOD - GAS**

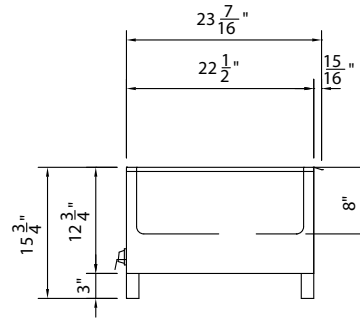
- **ASI-1G** 18-1/4"L x 23-1/2"W x 15-3/4"H
- **ASI-2G** 32-1/4"L x 23-1/2"W x 15-3/4"H
- **ASI-3G** 46-1/4"L x 23-1/2"W x 15-3/4"H
- **ASI-4G** 60-1/4"L x 23-1/2"W x 15-3/4"H
- **ASI-5G** 74-1/4"L x 23-1/2"W x 15-3/4"H
- **ASI-6G** 88-1/4"L x 23-1/2"W x 15-3/4"H



TOP VIEW



FRONT VIEW



RIGHT SIDE VIEW

LEGEND	
■	- GAS CONNECTION

DIMENSIONS:

FREIGHT CLASS: 100

Model	Length		Width		Height		Top Openings	Cutout Length		Cutout Width		Cube ft. Crated	Weight	
	in.	cm	in.	cm	in.	cm		in.	cm	in.	cm		lbs.	kg.
ASI-1G	18-1/4	46.4	23-1/2	59.7	12-3/4	32.4	1	17	43.2	23	58.4	9.1	43	19.6
ASI-2G	32-1/4	81.9	23-1/2	59.7	12-3/4	32.4	2	31	78.7	23	58.4	14.5	130	59.1
ASI-3G	46-1/4	117.5	23-1/2	59.7	12-3/4	32.4	3	45	114.3	23	58.4	19.6	170	77.3
ASI-4G	60-1/4	153.0	23-1/2	59.7	12-3/4	32.4	4	59	149.9	23	58.4	25.1	210	95.5
ASI-5G	74-1/4	188.6	23-1/2	59.7	12-3/4	32.4	5	73	185.4	23	58.4	30.3	240	109.1
ASI-6G	88-1/4	224.2	23-1/2	59.7	12-3/4	32.4	6	87	221.0	23	58.4	35.6	290	131.8

Power Supply:

1/2" IPS threaded pipe gas connection from supplied gas pressure regulator
 Specify natural gas or propane gas when ordering
 For high altitude orifice, specify elevation when ordering

NOTES:

No combustible materials should be stored under unit
 Allow proper air flow beneath unit to insure gas burns cleanly

DUKE MANUFACTURING CO.

2305 N. Broadway
 St. Louis, MO 63102

800.735.3853 Toll Free
 800.231.1130 In Missouri
 314.231.5074 Fax
 www.dukemfg.com



Specification subject to change