



Your Solutions Partner

Specifications

F.O.B Sedalia, Missouri 65301



ASI-3ESL

OPTIONS:

- 3 phase wiring (except **ADI-1E**)
- 1,000 watt element (not available on 120V 5- and 6-well units)
- Glass display shelves - **98x Series**
- Serving shelves - **956/956-460-x Series**
- Buffet shelves - **83x, 93xIFL, 93xHT, 93xBL**
- Self-service canopies - **TS530-xx, TS530-xx-1SN**
- Stainless spillage pans - **676**
- Telescope covers - **548, 546**
- Removable S/S carving station - **CS-2**
- Adapter Plates - **31, 32, 33**
- Adapter Bars - **513, 516**

AGENCY LISTING:



DUKE MANUFACTURING CO.
2305 N. Broadway
St. Louis, MO 63102

800.735.3853 Toll Free
314.231.5074 Fax
www.dukemfg.com

Approval Stamp(s):

PRODUCT INFORMATION:

PROJECT: _____

ITEM: _____

QUANTITY: _____

MODEL:

Slide - In - Slimline Hot Food - Electric

- ASI-1ESL** 24-1/4" length / 1 top opening
- ASI-2ESL** 46-1/4" length / 2 top openings
- ASI-3ESL** 58-1/4" length / 3 top openings

TOP RIM:

- Heavy gauge, 300 Series stainless steel
- Die-stamped openings - 12-1/16" x 20-1/16"
- 15/16" overhang on ends / 7/8" overhang on back
- Operator's side turned down
- Reinforced rim
- Vinyl foam gasket as sealant

HEAT COMPARTMENTS:

- 8" deep stainless steel liner, dry operation
- 1" fiberglass insulation - all 4 sides, bottom and between sections
- 750 watt exposed element in each section
- Voltage/Phase
 - 120 Volt/1 Ph
 - 208 Volt/1 Ph
 - 240 Volt/1 Ph
- Single phase standard
- Thermostat & indicator light for each element
- Master control switch and indicator light
- Includes #576 aluminum spillage pans - each well

EXTERIOR HOUSING

- Heavy gauge paint grip steel on one side and both ends
- Stainless steel operator's side

SHORT FORM SPECIFICATIONS:

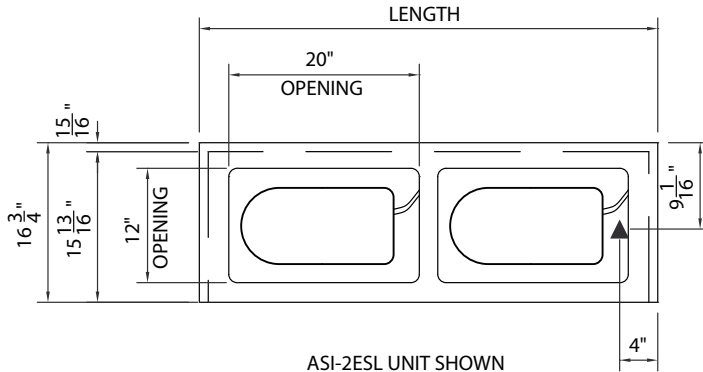
Duke Slide-In - Slimline - Hot Food - Electric. Top rim to be constructed of heavy gauge, 300 Series stainless steel with 15/16" overhang on ends, 7/8" overhand on back, and operator's side turned down. Rim to be reinforced with heavy gauge steel angle and provided with vinyl foam gasket as sealant with top surface. Top shall be provided with die-stamped openings, each measuring 12-1/6" x 20-1/6", with 12-1/16" measurement running front to back. Heat compartments shall have die-formed, 8" deep liners, fabricated of stainless steel and insulated on all four sides, bottom and between sections with 1" fiberglass. Each compartment to have 750 watt element. Unit to be wired to operate on 120, 208 or 240 volts, as specified, with single phase standard for hard wired in field only. Three phase available. Each element to have thermostat and indicator light, with master control switch and indicator light provided. Exterior housing shall be constructed of heavy gauge steel, except operator's side which shall be stainless steel.



**SLIDE - IN - SLIMLINE
HOT FOOD - ELECTRIC**

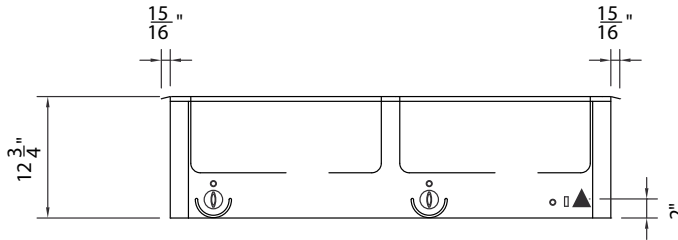
- **ASI-1ESL** 24-1/4" length / 1 top opening
- **ASI-2ESL** 46-1/4" length / 2 top openings
- **ASI-3ESL** 68-1/4" length / 3 top openings

LEGEND	
▲	ELECTRICAL CONNECTION

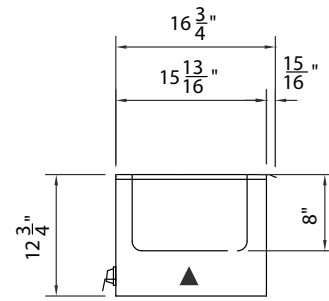


ASI-2ESL UNIT SHOWN

TOP VIEW



FRONT VIEW



RIGHT SIDE VIEW

DIMENSIONS:

FREIGHT CLASS: 100

Model	Length		Width		Height		Top Openings	Cutout Length		Cutout Width		Cube ft. Crated	Weight	
	in.	cm	in	cm	in	cm		in.	cm	in.	cm		lbs.	kg.
ASI-1ESL	24-1/4	61.6	6-11/16	42.6	12-3/4	32.4	1	23	58.4	16	40.6	7.6	80	36.4
ASI-2ESL	46-1/4	117.5	6-11/16	42.6	12-3/4	32.4	2	45	114.3	16	40.6	13.0	135	61.4
ASI-3ESL	68-1/4	173.4	6-11/16	42.6	12-3/4	32.4	3	67	170.2	16	40.6	18.5	185	84.1

ELECTRICAL SPECIFICATIONS: Consult factory for 3-phase electrical requirements and other options.)

Model	120 Volt/750 Watt		208 Volt/750 Watt		240 Volt/750 Watt	
	watts	amps	watts	amps	watts	amps
ASI-1ESL	750	6.2	900	3.6	1200	3.1
ASI-2ESL	1500	12.5	1500	7.2	1500	6.3
ASI-3ESL	2250	18.8	2250	10.8	2250	9.4



DUKE MANUFACTURING CO.

2305 N. Broadway
St. Louis, MO 63102

800.735.3853 Toll Free
800.231.1130 In Missouri
314.231.5074 Fax
www.dukemfg.com

Specification subject to change