



Specifications

F.O.B. Sedalia, Missouri 65301



OPTIONS:

- RJ-45 communications connection
- Wireless communications connection
- Clip on drainboards
- Drop in manual salad spinner
- Drop in electric salad spinner
- Poly cutting board
- Scrap block
- Stainless steel undershelfing
- Table mounted overshelf
- Fit® Fruit and Vegetable Wash Program

DIRECTIONAL FLOW:

- Left to Right
- Right to Left

AGENCY LISTINGS:



DUKE MANUFACTURING CO.
 2305 N. Broadway
 St. Louis, MO 63102

800.735.3853 Toll Free
 314.231-1130 In Missouri
 314.231.5074 Fax
 www.dukemfg.com

Approval Stamp(s):

PRODUCT INFORMATION:

PROJECT: _____
 ITEM: _____
 QUANTITY: _____

MODEL:

X-Green™ Produce Safety System - MINI

MIXG

BODY:

- 300 series stainless steel
- 16-gauge stainless tanks and drainboards
- 10" high x 4" deep backsplash
- 1/2" pre-rinse with a 1/2" add at faucet
- Twist handle drain
- 1-5/8" stainless steel cross rails
- Adjustable stainless steel bullet feet
- Fully insulated wash tank and pump
- 2 standard produce baskets
- Produce wash cart
- Fully skirted stainless steel front

CONTROLS:

- Single point connection with touch screen display
- 4 programmable wash cycles
- Monitors pH levels and automatically injects produce wash solution
- Monitors and adjusts temperature
- Statistical reporting package for traceability
- Plug n' Play components
- Integrated printer for labeling
- Integrated low water detection

PUMPS:

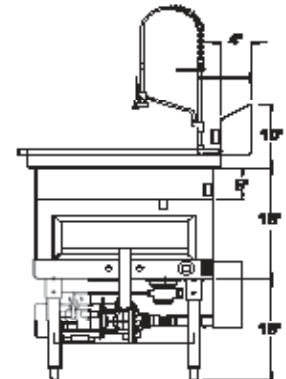
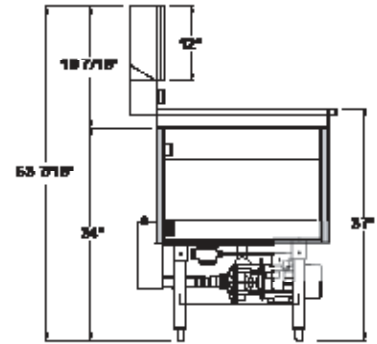
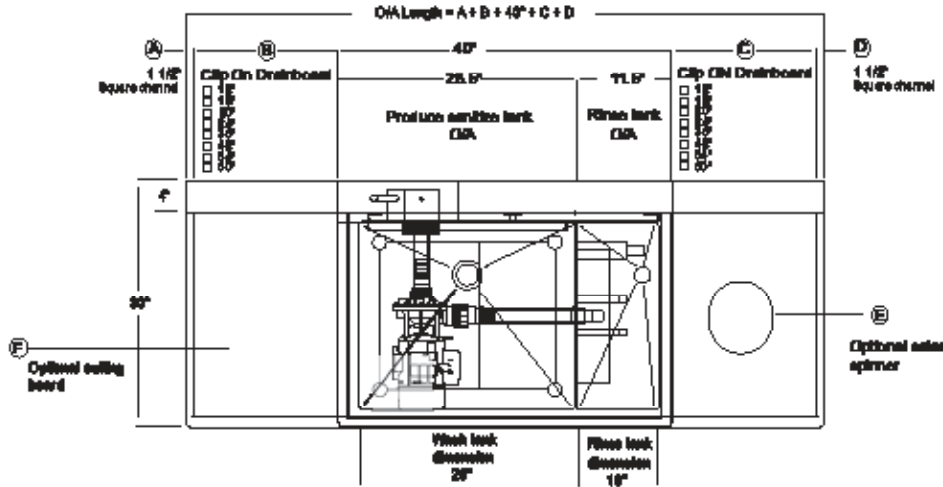
- 1 H.P. fully enclosed (TEFC) pump
- Inherent motor overload protection with manual reset

SHORT FORM SPECIFICATIONS:

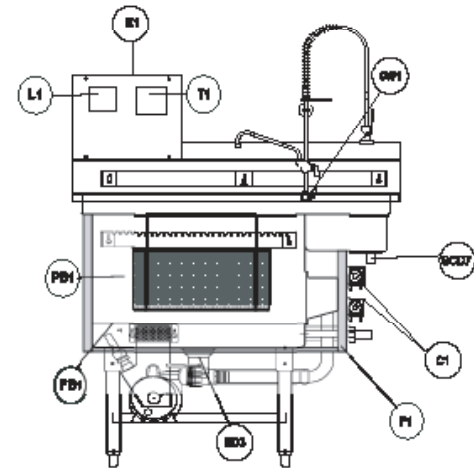
X-Green™ Produce Safety System -MINI- Shall be constructed of 300 series stainless steel. The top will consist of 16 ga. with a 10" high x 4" deep backsplash. Wash tank to be 26"x 22-7/8" x 18" and will be fully insulated and fully skirted. Legs to be constructed of 1-5/8" (.065 wall) stainless steel with fully adjustable feet. Controls to have touch screen display with pH monitoring, temperature monitoring, integrated label printer and communications reporting package. System to have integrated produce wash injection. Wash pump shall be a 1 H.P. TEFC motor. The pumps and controller will incorporate the Plug n' Play serviceability. System to have a single cold water pre-rinse sprayer head with a 10" add at faucet. Wash tank to have a 2" NPS stainless steel twist handle drain. Each system will included 2 standard produce baskets and produce wash cart.



MODEL:
X-Green™ Produce Safety System - MINI
 MIXG



LEGEND	CONNECTION INFORMATION (AFF - ABOVE FINISHED FLOOR)
C1	Chemical Feed Connection: (over primary faucet). 1" Dia. hole for hose grommet, 43-7/8" AFF.
E1	Electrical Connection: motors & controls
CW1	Cold Water Connection: Pre-rinse sprayer 1/2" FPT. 36-15/16" AFF
SD3	Sink Drains: 2" NPS
SCD7	Scrapper Drain: 1-1/2" MPT, 25-5/8" AFF
F1	1" Foam Insulation
L1	Label Printer
T1	Touch Screen Controls
FB1	False Bottom
PB1	Produce Baskets and Lids
All dimensions taken from finished floor line. May increase 3/4" or decrease 1/2" depending on leg adjustment. Recommend 7-3/4" AFF wall drain location.	



X-Green™ System - MINI	Elec. Specs	Rated Amps	Minimum supply circuit conductor ampacity	Maximum overcurrent protective device
MIXG	115/120/1	10	15	20



DUKE MANUFACTURING CO.
 2305 N. Broadway
 St. Louis, MO 63102
 800.735.3853 Toll Free
 800.231.1130 In Missouri
 314.231.5074 Fax
 www.dukemfg.com

Specification subject to change

01/11
 Printed in U.S.A.
 © 2011, Duke Manufacturing Co.