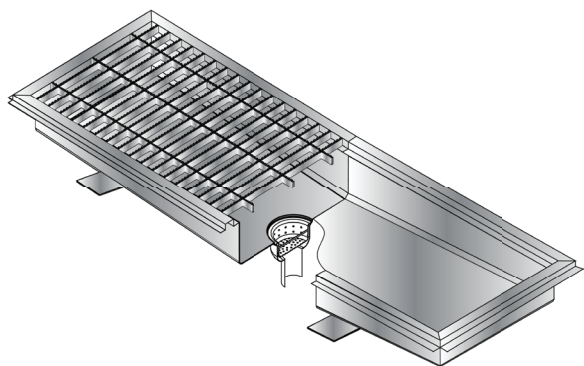




Specifications

F.O.B. St. Louis, Missouri 63102



OPTIONS:

- Custom tail piece: diameter ____ length ____
- Maximum grating length: ____
- 12 gauge type 300 series stainless steel

Approval Stamp(s):

PRODUCT INFORMATION:

PROJECT: _____
 ITEM: _____
 QUANTITY: _____

MODEL:

Trough Tech™ Systems

SFT Standard Floor Trough
 NFT Narrow Floor Trough
 ASFT Anti-Splash Floor Trough

Standard Floor Trough:

- 14 gauge type 300 series stainless steel construction with welded and polished seams
- Trough pitched towards drains for positive drainage
- 6-1/2" diameter bowl with strainer basket
- 3" outside diameter x 4" long tail piece

Narrow Floor Trough:

- 14 gauge type 300 series stainless steel construction with welded and polished seams
- Trough pitched towards drains for positive drainage
- 4" outside diameter x 4" long tail piece

Anti-Splash Floor Trough:

- 14 gauge type 300 series stainless steel construction with welded and polished seams
- Trough pitched towards drains for positive drainage
- 6-1/2" diameter bowl with strainer basket
- 3" outside diameter x 4" long tail piece

Tiger Grate™:

- 300 series stainless steel
- Fully automated laser constructed
- Laser cut serrated anti-skid finish on all top edges
- 3/16" wide by 1" tall puzzle locked bar-on-bar construction
- Edges are mitered at angles to avoid sharp edges
- Available in 3 standard configurations

NOTE: Length and width are measured to the outside of the frame

DUKE MANUFACTURING CO.
 2305 N. Broadway
 St. Louis, MO 63102

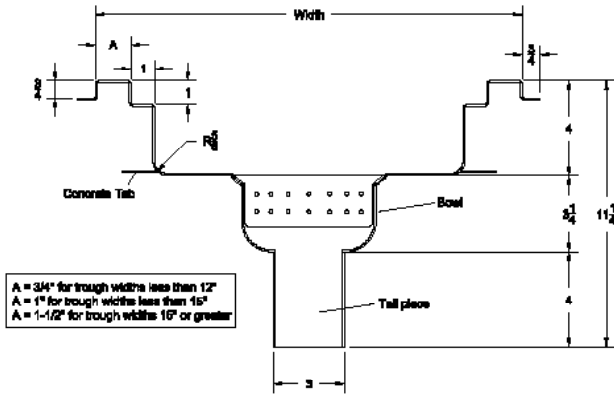
800.735.3853 Toll Free
 314.231-1130 In Missouri
 314.231.5074 Fax
 www.dukemfg.com



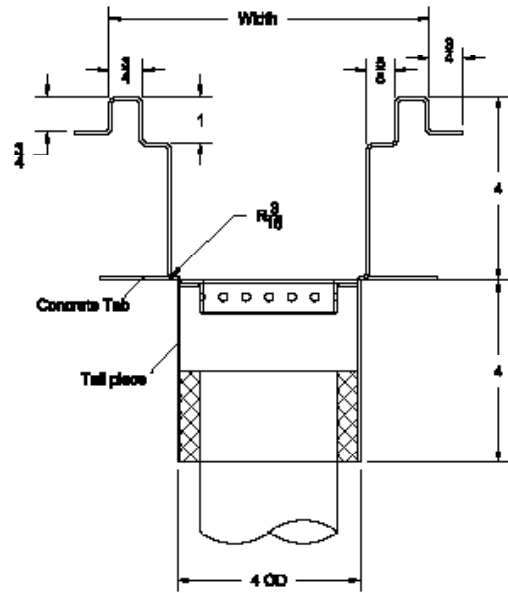
MODEL:

Trough Tech™ Systems

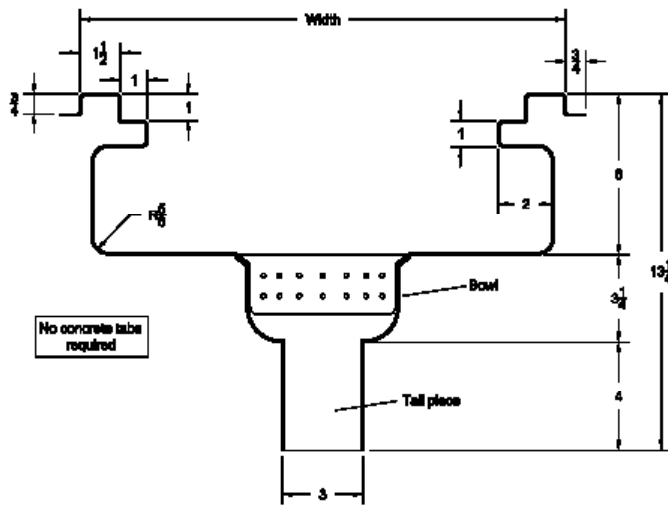
- SFT Standard Floor Trough
- NFT Narrow Floor Trough
- ASFT Anti-Splash Floor Trough



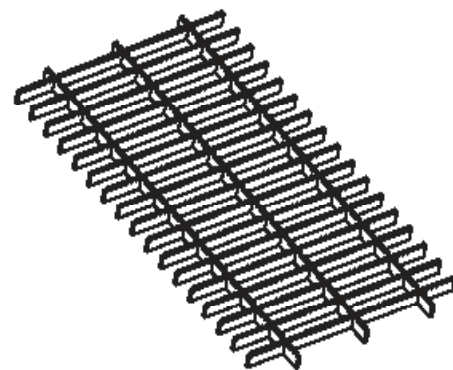
STANDARD



NARROW



ANTI-SPLASH



TIGER GRATE™ SYSTEM

DUKE MANUFACTURING CO.
 2305 N. Broadway
 St. Louis, MO 63102

800.735.3853 Toll Free
 800.231.1130 In Missouri
 314.231.5074 Fax
www.dukemfg.com

