



# ATMOSPHERIC HOT WATER DISPENSER

Model AWD-12

At the simple push of a button, the Hatco Atmospheric Water Dispenser delivers pre-measured quantities of hot water for food preparation or cleaning.

## FLEXIBILITY

The Atmospheric Hot Water Dispenser quickly provides 2, 3, or 4 quarts (1.9, 2.8, or 3.8 liters) of hot water, up to 195°F (91°C), for fast, easy food preparation like hot beverages, sauces, soups, gravy, hot cereals, rice, pasta, potatoes, gelatins, and other applications. The program can be interrupted for versatility and convenience. A manual dispense button permits additional water volume options. The 12-gallon (45 liter) stainless steel tank provides up to 8 gallons (30 liters) of continuous hot water and the removable stainless steel shelf allows access to dispense water into large containers.

Compact and durable, this dispenser requires minimal counter space. The tank can be emptied easily with convenient bottom drain.

## QUALITY

The following features assure the finest performance for years to come:

- Quickly delivers 2, 3, or 4 quarts (1.9, 2.8, or 3.8 liters) of hot water with a touch of a button for fast, easy food preparation.
- Program can be interrupted for versatility and convenience.
- Manual dispense button permits additional water volume options.
- Compact and durable unit requires minimal counter space.
- 12-gallon (45 liter) stainless steel tank provides up to 8 gallons (30 liters) of continuous hot water.
- Removable shelf allows access to dispense water into large containers.
- Tank is emptied easily with convenient bottom drain.
- Setpoint temperature can be adjusted from 75°F up to 195°F (24°-91°C), with the factory default setting at 195°F (91°C).



Model AWD-12

## WATER QUALITY REQUIREMENTS

Incoming water in excess of 3.0 grains of hardness per gallon (GPG) (.75 grains of hardness per liter) must be treated and softened before being supplied to booster heater(s). Water containing over 3.0 GPG (.75 GPL) will decrease the efficiency and reduce the operating life of the unit.

**Note: Product failure caused by liming or sediment buildup is not covered under warranty.**



ANSI/NSF 4

HATCO CORPORATION P.O. Box 340500 Milwaukee, WI 53234-0500 U.S.A.  
 (800) 558-0607 • (414) 671-6350 • Fax (800) 543-7521 • Int'l. Fax (414) 671-3976  
[www.hatcocorp.com](http://www.hatcocorp.com) • E-mail: [equipsales@hatcocorp.com](mailto:equipsales@hatcocorp.com)

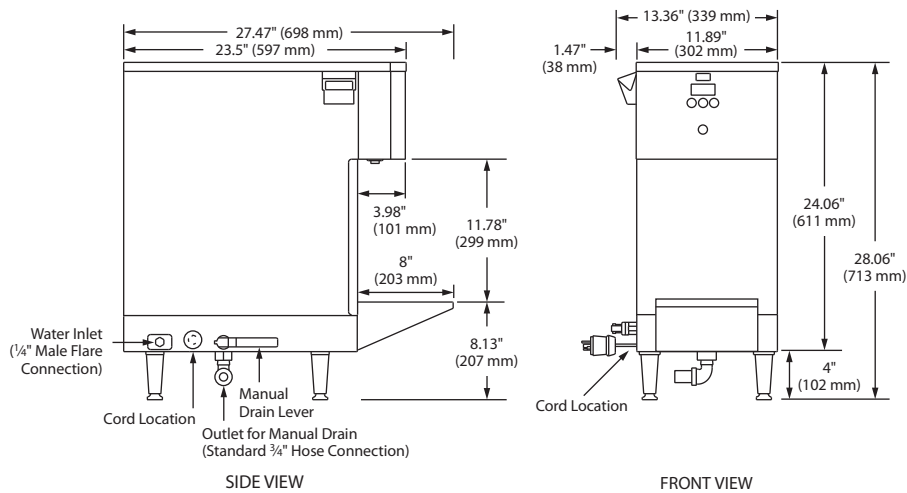
Form No. AWD Spec Sheet

Printed in U.S.A.  
July 2011



# ATMOSPHERIC HOT WATER DISPENSER

Model AWD-12



## SPECIFICATIONS

Model	Volts	Watts	Amps	Shipping Weight
AWD-12	208	5000	24.0	80 lbs. (36 kg)
	240	5000	20.8	80 lbs. (36 kg)

## WATER TEMPERATURE RECOVERY

### Dispensing Temperature of 195°F (91°C)

12 gph (45 lph) with 35°F (2°C) incoming water

33 gph (125 lph) with 140°F (60°C) incoming water

$gph = (kW \times 400) / (°F \text{ Temperature Rise})$

$lph = (kW \times 841) / (°C \text{ Temperature Rise})$

## DIMENSIONS

13.36"W x 27.47"D x 28.06"H (339 x 698 x 713 mm)  
with 4" (102 mm) legs.

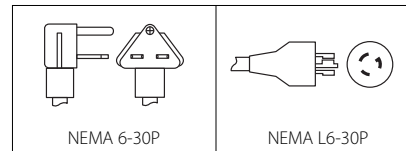
## VOLTAGE

208 or 240 volts, 50/60 Hz, single phase (use NEMA 6-30P).

## CORD LOCATION

Lower left side.

## PLUG CONFIGURATIONS



## OPTIONS (NOT FOR RETROFIT)

- NEMA L6-30P Locking Cap in lieu of NEMA 6-30P

## ACCESSORIES

- 3' (914 mm) Rubber Drain Hose with 10' (3048 mm) 1/4" Inlet Tubing

## PRODUCT SPECS

### Water Dispenser

The Atmospheric Water Dispenser to supply water ranging from 75°–195°F (24°–91°C) shall be a Hatco Model ... as manufactured for commercial use by the Hatco Corporation, Milwaukee, WI 53234 U.S.A.

The Water Dispenser shall have the capacity to heat 12 gph (45 lph) from 35° to 195°F (2° to 91°C) and it shall be rated at ... volts, ... watts.

With 24/7 parts and service assistance (US and Canada only), the dispenser shall be complete with a stainless steel tank and all internal plumbing, including a 1/4" male flare connection on the inlet and a 3/4" hose connection on the drain. All controls shall be built-in, including contactor.

The heater shall be equipped with an electronic temperature controller, an on-off switch, a digital temperature display, and preset dispensing push-buttons including manual dispense. Electric heating elements shall be metal sheathed, controlled by a submersed thermistor. The Water Dispenser shall be protected with high-temperature limit and low-water cut-off. The unit may be emptied easily by a convenient bottom drain.

The dispenser shall consist of a stainless steel tank, front cover, front control housing, and a painted white granite body with standard 4" (102 mm) legs and 6' (1829 mm) cord and plug.

HATCO CORPORATION P.O. Box 340500 Milwaukee, WI 53234-0500 U.S.A. • (800) 558-0607 • (414) 671-6350  
Fax (800) 543-7521 • Int'l. Fax (414) 671-3976 • www.hatcocorp.com • E-mail: equipsales@hatcocorp.com