



# SINGLE BUILT-IN AND DROP-IN RECTANGULAR HEATED WELLS

Models HWBL-FUL, -FULD HWB-FUL, -FULD, HWBH-FUL, -FULD HWBL-43, -43D, -43DA HWB-43, -43D, -43DA  
HWBH-43, -43D, -43DA

Hatco Built-In Rectangular Heated Wells provide flexibility and quality, with many options to choose from. These units hold steam table food hot and fresh with self-adjusting thermostats that read the actual temperatures and add heat only when needed.

## FLEXIBILITY

UL approved Built-In Rectangular Heated Wells are available in two sizes: full-size, and rectangular 4/3 size. Choose from a model with or without a drain, in low, standard, or high watt, and with or without a cord and plug (HWB-43 Series has no cord and plug). The standard compact controls, or optional recessed controls can be conveniently placed where needed.

## QUALITY

The following features assure the finest performance for years to come:

- Superior thermostat controls that read the actual temperature of the well and add heat only if needed.
- Controls feature a separate lighted ON/OFF rocker switch and temperature dial, allowing preset temperatures to be maintained.
- 50% larger drain with flat screen simplifies cleaning and holds pans level.
- Easy service access to heating elements and thermostats.
- Mounting kits for combustible countertops available.
- EZ locking hardware for quick installation.
- Thicker stainless steel construction and solid braised joints for durability.
- An optional WM Control Assembly is also available that will replace most existing controls on a customer's Drop-In Heated Well Unit.



Model HWB-43D with accessory food pans (single unit holding 4 third-size pans)



Model HWB-FULD with accessory food pan

## Ordering Instructions

Please specify the following with each order:

- 1. Desired Voltage:** 120, 208, or 240V (export voltage available)
- 2. Base Size of Heated Well:**
  - A. Rectangular: Full (12" x 20" (305 x 508 mm) or 4/3 (12" x 27" (305 x 686 mm)
- 3. Choose With or Without Drain**
- 4. Mounting Style:**
  - A. Top Mounted
  - B. Bottom Mounted (rectangular full size units only)
- 5. Wattage:**
  - A. High Watt
  - B. Standard Watt
  - C. Low Watt (120V only)
- 6. Agency:**
  - A. UL and CUL
  - B. UL-EPH (sanitary listing)
  - C. CE Mark available on standard and high watt units



Quick access heating element and thermostat, for easy service

## Built-in and Drop-in Heated Wells Countertop Cutout Dimensions

Model	Minimum Width	Maximum Width	Minimum Depth	Maximum Depth	Below Counter
HWB-FUL	12.63" (321 mm)	12.94" (328 mm)	20.63" (524 mm)	20.94" (531 mm)	8.57" (218 mm)
HWB-FUL•	14" (356 mm)	14.25" (362 mm)	22" (559 mm)	22.25" (565 mm)	8.57" (218 mm)
HWB-43	12.69" (322 mm)	12.94" (329 mm)	27.69" (703 mm)	28" (711 mm)	8.56" (217 mm)
HWB-43•	14" (356 mm)	14.25" (362 mm)	29" (737 mm)	29.25" (743 mm)	8.56" (217 mm)

• Indicates cutout dimensions for a combustible countertop surface.

Standard thermostatic control with bezel



Optional larger recessed thermostatic control - No Charge



Optional WM Control Assembly (exact replacement for most existing drop-in heated well units)



## Control Cutout Dimensions

- A. Standard Compact Control Panel Cutout: 3.25"W (83 mm) x 3.75"H (95 mm)
- B. Optional Recessed Control Panel Cutout: 5.88"W (149 mm) x 6.38"H (162 mm)
- C. Optional WM Control Assembly Panel Cutout: 4.78"W (121 mm) x 5"H (127 mm)

## Control Cutout Dimensions for HWB-43DA

- A. Standard Control Panel Cutout: 10.13"W (257 mm) x 4.75"H (121 mm)



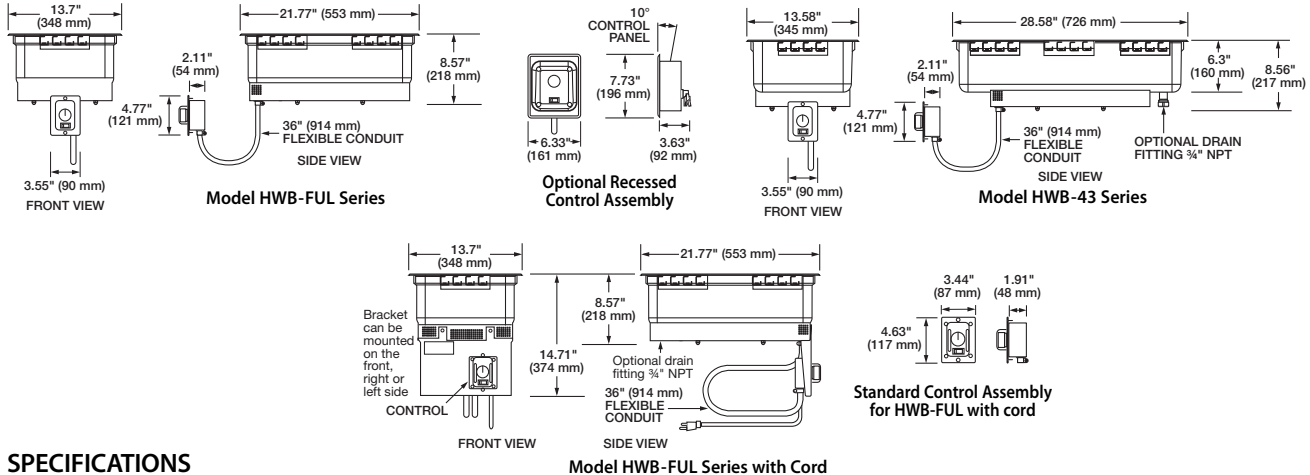
HATCO CORPORATION P.O. Box 340500 Milwaukee, WI 53234-0500 U.S.A.  
(800) 558-0607 • (414) 671-6350 • Fax (800) 543-7521 • Int'l. Fax (414) 671-3976  
www.hatcocorp.com • E-mail: equipsales@hatcocorp.com

METAL SHEATHED ELEMENTS GUARANTEED AGAINST BURNOUT AND BREAKAGE FOR TWO YEARS.



# SINGLE BUILT-IN AND DROP-IN RECTANGULAR HEATED WELLS

Models HWBL-FUL, -FULD HWB-FUL, -FULD, HWBH-FUL, -FULD HWBL-43, -43D, -43DA HWB-43, -43D, -43DA  
HWBH-43, -43D, -43DA



## SPECIFICATIONS

### Full-Size Rectangular Models – Low Watt

Model*	Volts	Watts	Amps	Shipping Weight
HWBL-FUL	120	750	6.3	21 lbs. (10 kg)
HWBL-FULD	120	750	6.3	24 lbs. (11 kg)

### Full-Size Rectangular Models – Standard Watt

Model*	Volts	Watts	Amps	Shipping Weight
HWB-FUL	120	1200	10.0	21 lbs. (10 kg)
HWB-FULD	208	1200	5.8	24 lbs. (11 kg)
HWB-FULD	240	1200	5.0	24 lbs. (11 kg)

### Full-Size Rectangular Models – High Watt

Model*	Volts	Watts	Amps	Shipping Weight
HWBH-FUL	120	1650	13.8	21 lbs. (10 kg)
HWBH-FULD	208	1650	7.9	24 lbs. (11 kg)
HWBH-FULD	240	1650	6.9	24 lbs. (11 kg)

### 4/3 Size Rectangular Models – Low Watt

Model*	Volts	Watts	Amps	Shipping Weight
HWBL-43	120	750	6.3	30 lbs. (14 kg)
HWBL-43D	120	750	6.3	33 lbs. (15 kg)
HWBL-43DA	120	750	6.3	36 lbs. (16 kg)

### 4/3 Size Rectangular Models – Standard Watt

Model*	Volts	Watts	Amps	Shipping Weight
HWB-43	120	1200	10.0	30 lbs. (14 kg)
HWB-43D	208	1200	5.8	33 lbs. (15 kg)
HWB-43DA	240	1200	5.0	36 lbs. (16 kg)

### 4/3 Size Rectangular Models – High Watt

Model*	Volts	Watts	Amps	Shipping Weight
HWBH-43	120	1650	13.8	30 lbs. (14 kg)
HWBH-43D	208	1650	7.9	33 lbs. (15 kg)
HWBH-43DA	240	1650	6.9	36 lbs. (16 kg)

\* "D" added to model number indicates unit with 3/4" NPT drain.

"A" added to model number indicates autofill.

## OPTIONS (NOT FOR RETROFIT)

- Flush Mount and WM Assembly Control Bezel in *Designer Colors*: Warm Red, Black, Gray Granite, White Granite, Navy Blue, Hunter Green, Antique Copper (not available for HWB-FUL w/cord)
- Additional Lead Wire available in one foot increments (Lead wire only – conduit not included) (Models are shipped with 1' (305 mm) of lead wire – no conduit)
- Thermostat with 6' (1829 mm) Capillary
- Larger Recessed Thermostat Control (not available for auto-fill models)
- WM Control Assembly (not available for auto-fill models)

## PRODUCT SPECS

### Built-in Heated Well

The Built-in Rectangular Heated Well with or without cord and plug (HWB-43 Series has no cord and plug) shall be a Model ... as manufactured by the Hatco Corporation, Milwaukee, WI 53234 U.S.A.

With 24/7 parts and service assistance (U.S. and Canada only), the Built-in Heated Well shall be rated at ...watts, ...volts, and be ...inches

- HWB-FUL w/cord Standard

## ACCESSORIES

- Mounting Kit for Combustible Countertops (All Models)
- 12" (305 mm) and 20" (508 mm) Pan Support Bars
- Stainless Steel Food Pans
- Adapters to Convert Warmers to Hold 4 Quart (4 Liter), 7 Quart (7 Liter) or 11 Quart (10 Liter) Inserts, 11 Quart (10 Liter) Insert for Model HWB-43 Series only
- 3/4 NPT Ball or Gate Valve for Unit with Drains

(millimeters) in overall width and be ...inches (millimeters) in overall depth. It shall consist of stainless and aluminized steel housing with a metal sheathed heating element, EZ locking hardware for installation, and a remote thermostat with lighted power switch.

Accessories may include stainless steel mounting kit, adapter bars, adapter top, and valves.

**HATCO CORPORATION P.O. Box 340500 Milwaukee, WI 53234-0500 U.S.A. • (800) 558-0607 • (414) 671-6350**  
**Fax (800) 543-7521 • Int'l. Fax (414) 671-3976 • www.hatcocorp.com • E-mail: equipsales@hatcocorp.com**