

**HOBART**701 S Ridge Avenue, Troy, OH 45374  
1-888-4HOBART • www.hobartcorp.com**2HXGF GAS FRYER/  
FRYMATE™****HOBART****STANDARD FEATURES**

- 2HXG4F filter system accommodates:
  - One 45-50 lbs. capacity tank per fryer battery and one Frymate™ Dump Station.
- 2HXG6F filter system accommodates:
  - One 65-70 lbs. capacity tank per fryer battery and one Frymate™ Dump Station.
- 2HXG8F filter system accommodates:
  - One 85-90 lbs. capacity tank per fryer battery and one Frymate™ Dump Station.
- Choose from Millivolt (M), Solid State (D), or Computer (C) Controls.
- Drain valve interlock switch - available on (D) and (C) controls.
- 6" Casters adjustable - 2 locking, 2 non-locking.
- Electronic ignition on solid state (D) and computer (C) control fryers.
- Drawn (seamless) 18 gauge, #304 stainless steel filter pan. 70 lbs. frying compound capacity on 2XG45F, 110 lbs. capacity on 2XG65F and 2XG85F.
- Paperless stainless steel filter screen filters from 2 sides filter area = 270 sq. inches. Micro Filtration Fabric Envelope filter area = 350 square inches.
- 1/3 H.P. motor and pump circulates frying compound at a rate of 8.0 gallons per minute.
- Patented solenoid activated one touch push button switch to engage pump and motor (solid state (D) and computer (C) controls models only).
- Boil Out ByPass™ removes water and discards oil.
- Tank brush, stainless steel crumb scoop and clean-out rod.
- Flexible gas hose with quick disconnect and restraining device.
- 6' high temperature discard hose
- One year limited parts and labor warranty. 10 year replacement tank part warranty.

**MODELS**

- 2HXG4FD, 2HXG4FC or 2HXG4FM** – Gas Fryer/Frymate™ KleenScreen PLUS® Filtration System
- 2HXG6FD, 2HXG6FC or 2HXG6FM** – Gas Fryer/Frymate™ KleenScreen PLUS® Filtration System
- 2HXG8FD, 2HXG8FC or 2HXG8FM** – Gas Fryer/Frymate™ KleenScreen PLUS® Filtration System

**ACCESSORIES**

- Stainless steel tank cover.
- Micro-Filtration fabric envelopes - 6 filters/per package
- Rear oil reclamation discard connection.
- GR45F - Twin basket lifts
- GR85F - Single and twin basket lifts
- Food Warmer - HL1000
- Prison security packages

Specifications, Details and Dimensions on Reverse Side.



2HXG6DF Shown

**2HXGF GAS FRYER/FRYMATE™**

# 2HXGF GAS FRYER/ FRYMATE™



701 S Ridge Avenue, Troy, OH 45374  
1-888-4HOBART • www.hobartcorp.com

## SPECIFICATIONS:

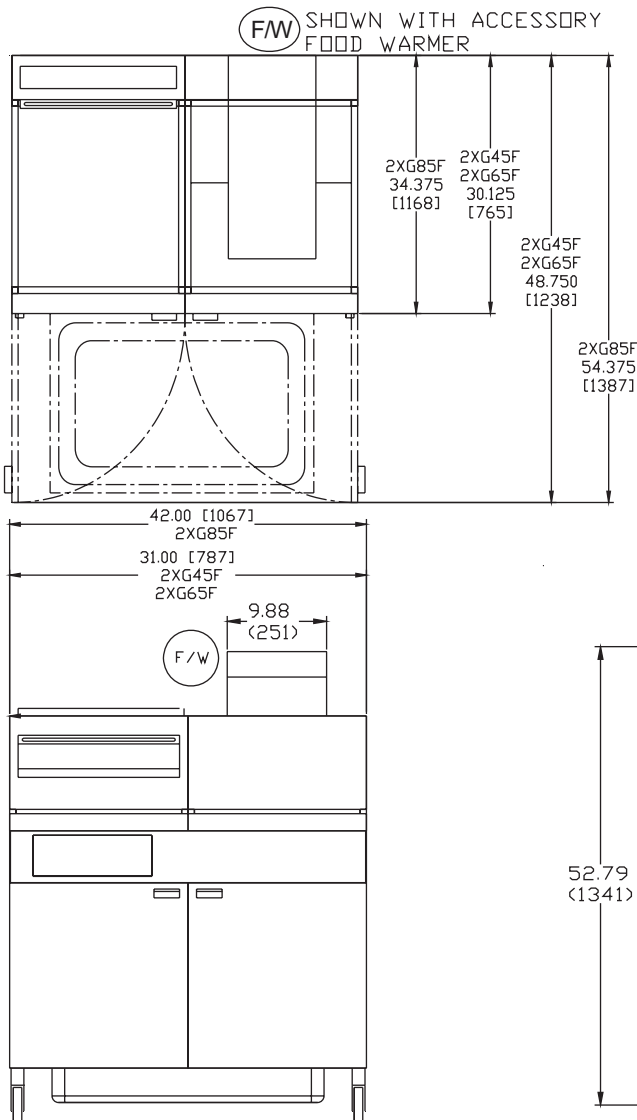
### IMPORTANT

1. A combination valve with pressure regulator is provided with this unit.  
Natural Gas 4.0" (102 mm) W.C.  
Propane Gas 10.0" (254 mm) W.C.
2. An adequate ventilation system is required for Commercial Cooking Equipment. Information may be obtained by writing to the National Fire Protection Association, Batterymarch Park, Quincy, MA 02269. When writing refer to NFPA No. 96.

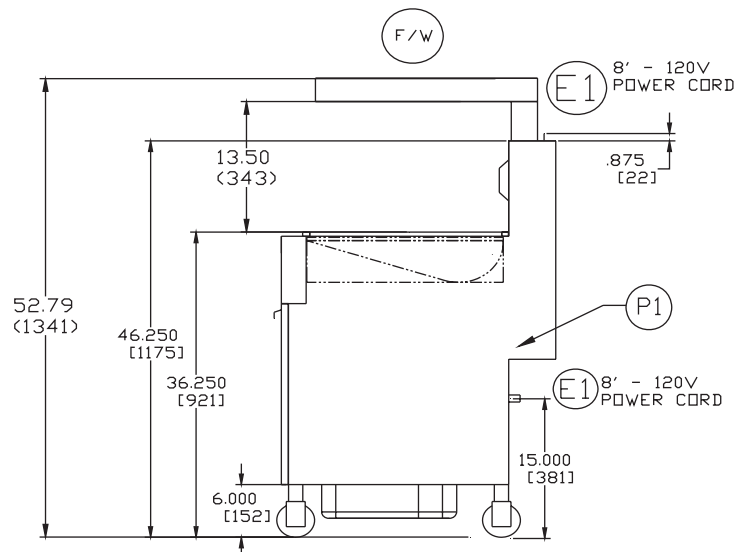
3. All models require a 6" (152 mm) clearance at both sides and rear adjacent to combustible construction.
4. All models require a 16" (407 mm) minimum clearance to adjacent open top burner units.
5. This appliance is manufactured for commercial installation only and is not intended for home use.

### SERVICE CONNECTIONS:

- (P1) ½" (13 mm) NPT common rear gas connection.
- (E1) 120 volt, 60 Hz, 1 phase electrical connection (filter pump).
- (F/W) Optional Heat Lamp 120 volt, 60 Hz, 1 phase electrical connection.



MODEL	FILTER PAN CAPACITY	FILTER AREA SCREEN/FABRIC ENVELOPE	MOTOR
2HXG4F	70 lbs.	270 sq. in. 350 sq. in.	1/3 H.P. 1750 RPM
2HXG6F 2HXG8F	110 lbs.	270 sq. in. 350 sq. in.	1/3 H.P. 1750 RPM
Pump	Electric/Amps	Electric Power	
8 Gal./Min.	115 V 5.0 A	115 V 60 Hz 1 Ph	



MODEL	WIDTH	DEPTH	OVERALL HEIGHT	WORKING HEIGHT	TANK SIZE	BTU/HR.	FRY COMP. CAPACITY	APPROX. SHIP. WEIGHT
2HXG4F	31.00"	30.13"	46.25"	36.25"	14" x 14"	90,000	45-50 lbs.	323 lbs. 146 kg
2HXG6F	42.00"	30.13"	46.25"	36.25"	19.5" x 14"	150,000	65-70 lbs.	500 lbs. 227 kg
2HXG8F	42.00"	34.38"	46.25"	36.25"	19.5" x 18.25"	150,000	85-90 lbs.	620 lbs. 281 kg

As continued product improvement is a policy of Hobart, specifications are subject to change without notice.