



HHC HOLDING CABINET

HOBART

STANDARD FEATURES

- Stainless steel front, sides and top — constructed of durable high grade stainless steel, adds for life and easy cleaning.
- Stackable — Ideal for stacking a convection oven on top, to give you a complete system.
- Temperature Indicator — Displays temperatures from 10°F to 190°F.
- Capability of dry or moist heat.
- Powered by 1200 watts.
- Racks and side guides easy to remove for cleaning.

Specifications, Details and Dimensions on Back.



HHC HOLDING CABINET

HHC HOLDING CABINET



SPECIFICATIONS

Listed by Underwriters Laboratories Inc.

CONSTRUCTION: All stainless steel interior & exterior. Heavy casters & legs with mounting plates.

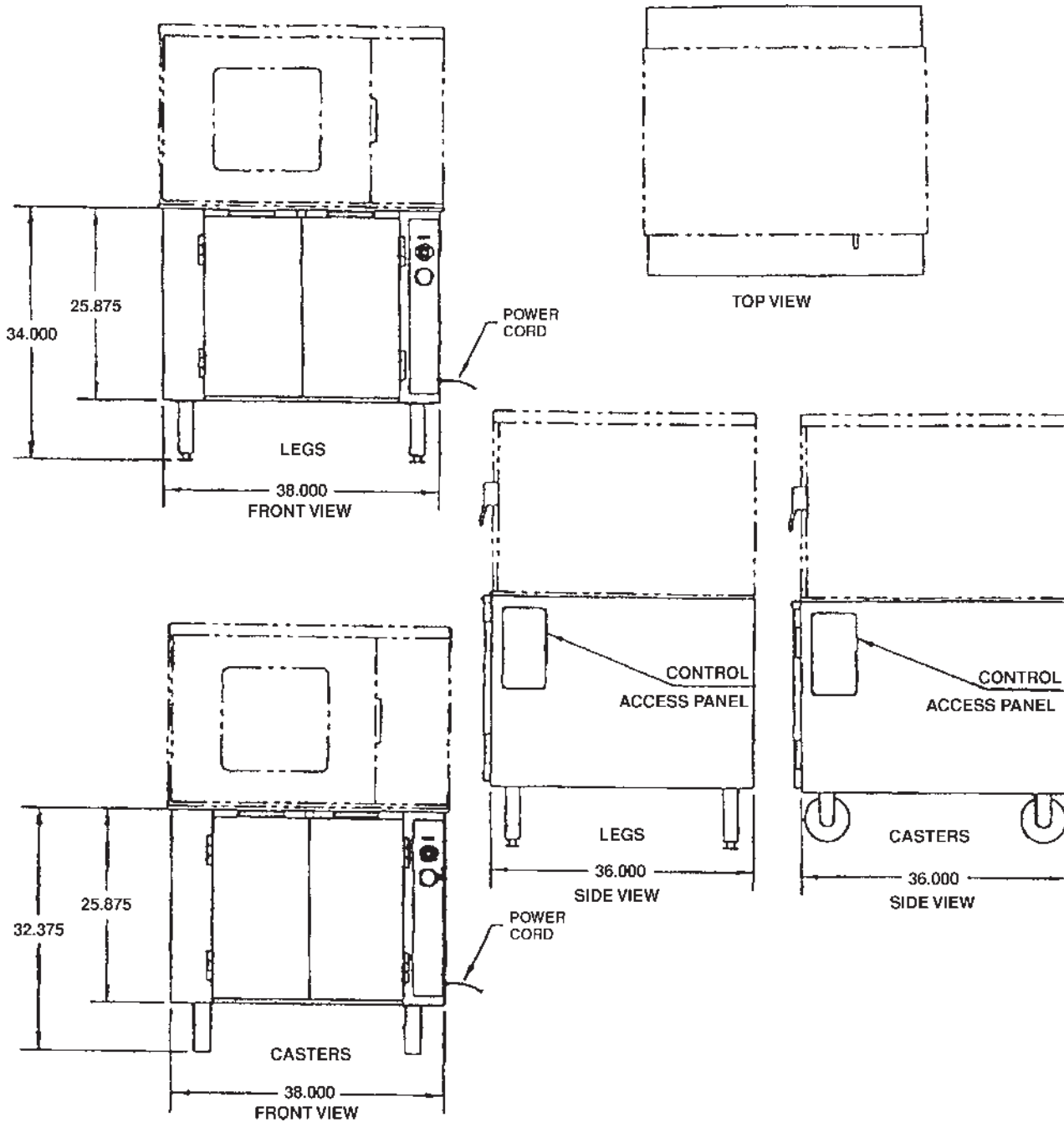
CONTROLS: Thermostat, temperature indicator (10°F to 190°F). Dual operating indicator lights.

CAPACITY: 18 x 26 standard sheet trays, side mount full wire tray slides (removable).

ELECTRICAL: 120/60/1; Watts 1200; Amps 10. Cord & plug supplied.

As continued product improvement is a policy of Hobart, specifications are subject to change without notice.

DETAILS AND DIMENSIONS



701 S Ridge Avenue, Troy, OH 45374 • 937-332-3000