

## FPT Combination Floor Pan & Trough for Steamer, Kettle & Braising Pan

**SPECIFICATION:**

**FPT Model** Floor Pan & Troughs are 14-gauge type 304 stainless steel, with large integral coves and pitched 1/4" per foot to a 6 1/2" OD waste outlet with 4" OD tailpiece. Perforated waste basket provided at each drain. Anchor straps welded to the sides secure trough to the floor.

Integral pan extends from trough to form a pitched base for all equipment in the area. Rear of pan is turned up to the wall and side ledges slope to the trough. Continuous stiffeners stabilize the pan for extreme temperatures and anchor straps secure unit to the floor.

Recessed flange and 1" deep ledge for IMC grating are integral with the unit. Trough is 4" deep overall.

Joints are TIG welded and leak-proof. Exposed surfaces finished brush satin.

**PRODUCT GUIDE:**

Use for Institutional and Public Buildings in large Cook-Chill facilities. Protects floor from corrosion damage and provides a stable base for heavy equipment.

Integral coves, deep pitch and a large waste cup, assure quick and complete drainage.

Pan is integrally sloped for complete drainage to trough.

Recessed flange supports floor tile and provides a grout pocket.

Setting frame for waterproof membrane and/or integral seepage flange with "weep" holes can be added for wet floor areas.

**OPTIONS:**

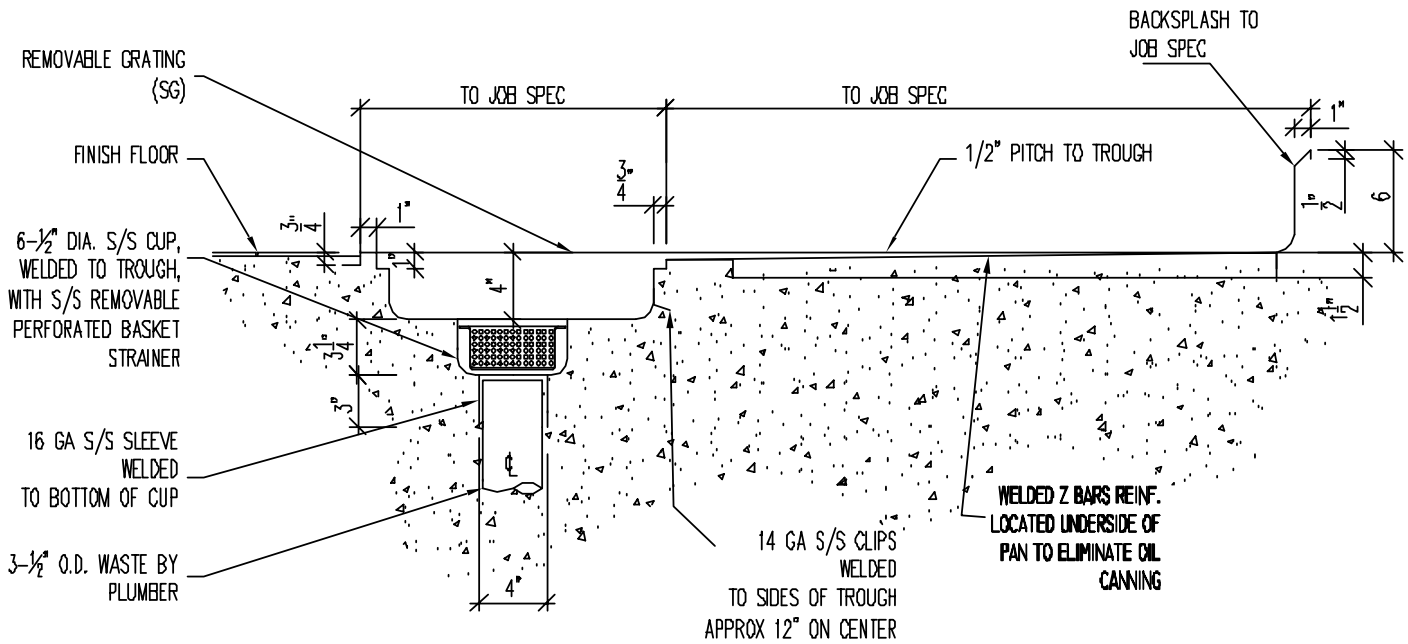
- 12-gauge stainless steel
- Scrap collection tray
- Use with any style IMC trough grating
- Custom designs, sizes and waste location
- Optional wastes and locations
- Seepage flange and "weep" holes
- See Price Book for other options
- Standard and stock sizes fit most applications



\*Price page 51

Specifications subject to change without notice.

# FPT Combination Floor Pan & Trough for Steamer, Kettle & Braising Pan



## COMBINATION FLOOR PAN & TROUGH

MODEL	TROUGH SIZE (WxL)	METRIC	WEIGHT	MODEL	SIZE (WxL)	METRIC	WEIGHT
FPT-1224-48	12" x 24"	305 x 610	96	FPT-2424-48	24" x 24"	610 x 610	128
FPT-1236-48	12" x 36"	305 x 914	144	FPT-2436-48	24" x 36"	610 x 914	188
FPT-1248-48	12" x 48"	305 x 1219	192	FPT-2448-48	24" x 48"	610 x 1219	256
FPT-1260-48	12" x 60"	305 x 1524	240	FPT-2460-48	24" x 60"	610 x 1524	320
FPT-1272-48	12" x 72"	305 x 1829	288	FPT-2472-48	24" x 72"	610 x 1829	384
FPT-1284-48	12" x 84"	305 x 2134	336	FPT-2484-48	24" x 84"	610 x 2134	448
FPT-1296-48	12" x 96"	305 x 2438	384	FPT-2496-48	24" x 96"	610 x 2438	512
FPT-12108-48	12" x 108"	305 x 2743	432	FPT-24108-48	24" x 108"	610 x 2743	576
FPT-12120-48	12" x 120"	305 x 3048	480	FPT-24120-48	24" x 120"	610 x 3048	640
FPT-1824-48	18" x 24"	458 x 610	116	FPT-3024-48	30" x 24"	762 x 610	156
FPT-1836-48	18" x 36"	458 x 914	174	FPT-3036-48	30" x 36"	762 x 914	234
FPT-1848-48	18" x 48"	458 x 1219	232	FPT-3048-48	30" x 48"	762 x 1219	312
FPT-1860-48	18" x 60"	458 x 1524	290	FPT-3060-48	30" x 60"	762 x 1524	390
FPT-1872-48	18" x 72"	458 x 1829	348	FPT-3072-48	30" x 72"	762 x 1829	468
FPT-1884-48	18" x 84"	458 x 2134	406	FPT-3084-48	30" x 84"	762 x 2134	556
FPT-1896-48	18" x 96"	458 x 2438	464	FPT-3096-48	30" x 96"	762 x 2438	624
FPT-18108-48	18" x 108"	458 x 2743	522	FPT-30108-48	30" x 108"	762 x 2743	702
FPT-18120-48	18" x 120"	458 x 3048	580	FPT-30120-48	30" x 120"	762 x 3048	780

Note - Standard troughs up to 96" have one (1) waste at center. Over 96", troughs have two (2) wastes equidistant.

\*See Price book page 51 & 58-59 for additional sizes and options.

Specifications subject to change without notice.



P.O. Box 206  
 Copiague, NY 11726-0206

800-221-5644/631-789-8881  
 Fax: 631-789-3633

FPT-30 1007

www.imcteddy.com