

# SPACE BANDIT AIR SCREEN

ITEM: \_\_\_\_\_ QUANTITY: \_\_\_\_\_

## MODEL # SCRFC II

Shown with optional roll down locking night cover

### SPECIFICATIONS

The SCRFC-II is a grab and go style refrigerator with contemporary style double-pane insulated glass end panels designed to include an optional roll down locking night cover. The self-contained refrigeration system includes digital controls allowing unit to engage in minimal defrost cycles. Front mounted red indicator light alerts operator if condensing unit requires cleaning. Unique baffled compressor housing for front air intake, top rear air discharge reducing noise levels plus zero clearance from wall installation. Standard extra deep shelving offers 20% additional merchandising space.



Available depths:  35 3/4" Available lengths:  48"  60"  72"

### STANDARD FEATURES

- Self-Contained Refrigeration
- Metal Frame Base Construction with Lift Out Black Louvered Air Grill for Easy Access to Compressor
- Brushed Aluminum Interior Ends
- Standard Grade Laminated Exterior with T-Mold Edge Protection
- Removable Stainless Steel Deck Pan with Hemmed Edge to Contain Spills
- Perforated Stainless Steel Interior Back Panel
- T5 Quick Snap-in Top Canopy Light
- (4) Adjustable Stainless Steel Extra Deep Shelves for Maximum Capacity, with T5 Quick Snap-in Lights
- Electronic Digital Control and Defrost Termination Red Indicator Lights Alerts Operator if Condenser Requires Cleaning
- Digital Temperature Display
- Unique Internal Baffle Design for Compressor Noise Reduction
- Front Air Intake with Top Rear Air Discharge for Zero Clearance
- Electric Condensate Evaporator Pan
- 8' Cord and Plug
- ETL Listed in Accordance with UL 471 and NSF 7 Standards
- Environmentally Safe Refrigerant
- 1 Year Parts and Labor Warranty

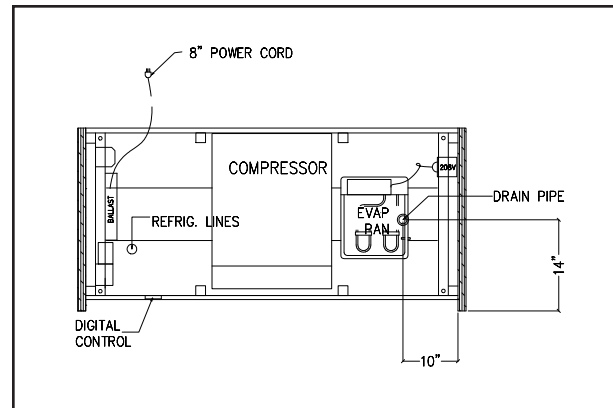
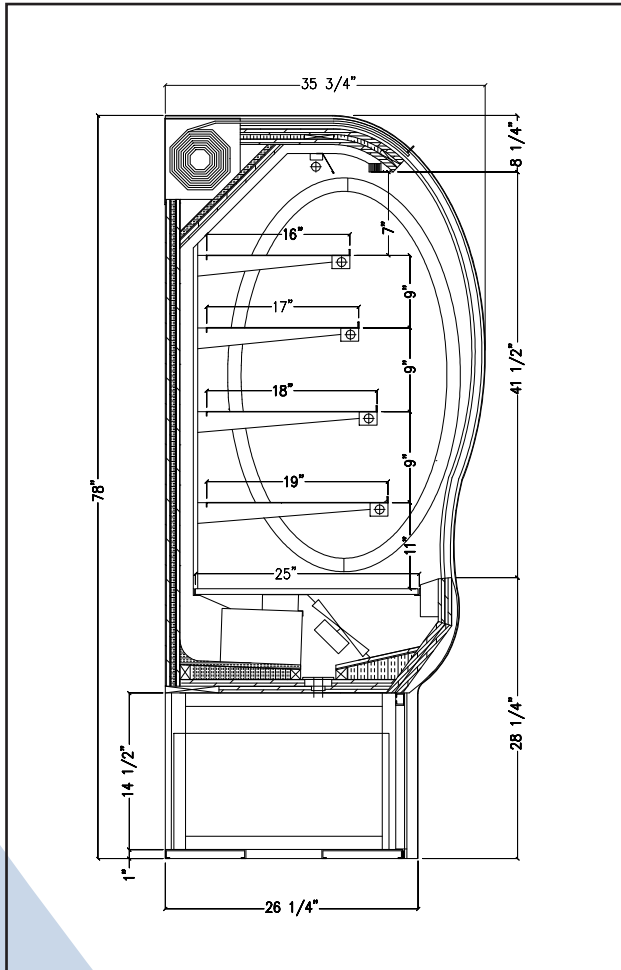
### OPTIONAL FEATURES

- Green Screen
- Stainless Steel Exterior Finish with Standard T-Molding
- Special Laminates
- Wood Veneers (Unfinished)
- Wood Veneers (Stained & Sealed)
- Promolux Lighting (Low UV)
- Wire Shelves:
  - Brass  White  Black  Chrome
- Casters
- Bullet Feet
- Powder Coated Interior Back Panel and Hardware:
  - Black  White  Custom Color
- Mirrored Polished Stainless Steel Interior Ends
- Mirrored Polished Stainless Steel Interior Back
- Finished Back with Black Air Grill
- Stainless Steel Louvered Air Grill
- Solid Insulated Rear Sliding Doors
- See Through Insulated Rear Sliding Doors
- Removable Locking Security Panels
- Roll Down Locking Security Cover
- Pull Down Econo Night Shade
- #23 Econo Frost Night Shade
- Tie In Strips for Interconnection of Units
- Extra Large Heavy Duty Electric Condensate Evaporator Pan
- Easy Slide-out Condensing Unit
- Remote Refrigeration
- 5 Year Compressor Warranty

# SPACE BANDIT AIR SCREEN

TOLL FREE: 800-525-3692

## MODEL # SCRFC II



### Electrical & Plumbing locations



Conforms to UL Standard 471,  
and NSF Standard 7; Certified  
To CSA Standard C22.2 No.120

\* Drawing shown with optional roll down locking night cover.

MODEL	L	D	H	COMP HP	VOLT	AMP	NEMA PLUG	WT	REFRIG
SCRFC4878R II	48	35 3/4	78	3/4	115/208-230 4 wire	16.6	L14-20P	700	404A
SCRFC6078R II	60	35 3/4	78	1 1/4	115/208-230 4 wire	17.3	L14-30P	825	404A
SCRFC7278R II	72	35 3/4	78	1 1/4	115/208-230 4 wire	18.0	L14-30P	950	404A

1. Refrigeration System is designed so air will flow front to rear. Unobstructed air flow must be maintained to ensure unit performance and maintain warranty.
2. RPI Merchandiser is designed for use in stores where ambient temperatures and humidity do not exceed 75 Degrees Fahrenheit and 55% R.H. Locate away from direct sunlight, rapid air currents and extreme temperature changes. Exposure to air currents from ceiling fans, air conditioning diffusers, ovens, etc. will disrupt the case air curtain and refrigerated zone. Refrigerated Displays are designed to maintain pre-chilled products. Adding or loading warm products above 41 Degrees Fahrenheit can affect the temperature in the entire cabinet. RPI in line with its policy to continually improve its products reserves the right to change materials and specifications without notice.

CALL TOLL FREE: 800-525-3692 (609-714-2330)

FAX: 609-714-2331 [www.rpiindustries.com](http://www.rpiindustries.com)

220 ROUTE 70, MEDFORD, NJ 08055

**RPI** REGAL  
PINNACLE  
INTEGRATIONS INDUSTRIES, INC.