

## MODEL # VICD-SQ MES

### SPECIFICATIONS

**Very clean, very simple way to increase sales by utilizing a slide-in style refrigerated display, with a front counter. The unit has a rear slide-out drawer for easy access to product. Interior sides and rear of the unit come in a mirror-stainless finish, with interior lighting to enhance the product presentation. Unit comes standard with insulated glass.**



Available depths:  28 7/8"

Available lengths:  36 1/4"  52 1/8"

Available heights:  30"

#### NOTE:

**UNIT SHOWN WITH OPTIONAL CASTERS**

#### STANDARD FEATURES

- Slide-Out Drawer for Easy Access
- Insulated Glass Top, Front & Ends
- Base Cabinet Sides & Rear Stainless Steel Finished
- Interior LED Lighting
- Lift-up Evaporator
- Self-Contained Refrigeration
- Environmentally Safe Refrigerant
- Rear Air Ventilation Kit
- Fan Assisted Cooling System
- 8' Cord & Plug
- Programmable Digital Refrigeration Controller
- Environmentally Safe Refrigerant
- ETL Listed in Accordance with UL 471 and NSF 7 Standards
- Built In Condensate Evaporator Pan (Fully Automated, No Floor Drain Required)

#### OPTIONAL FEATURES

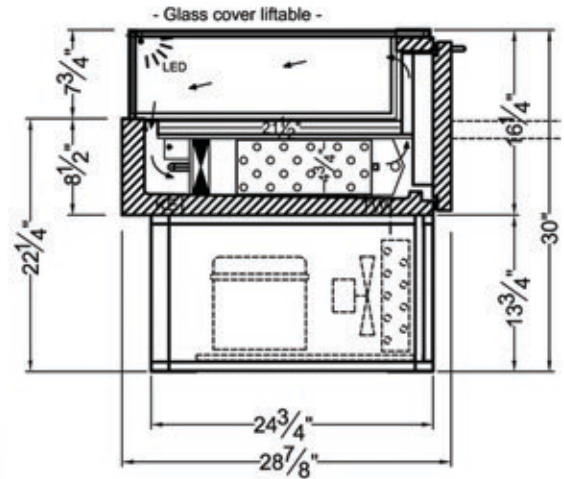
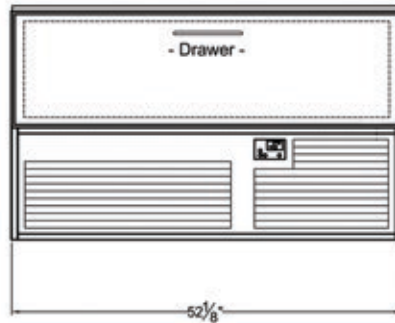
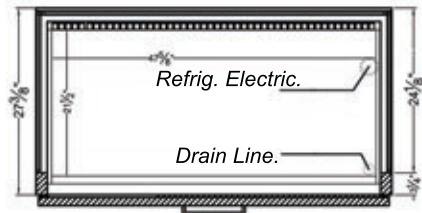
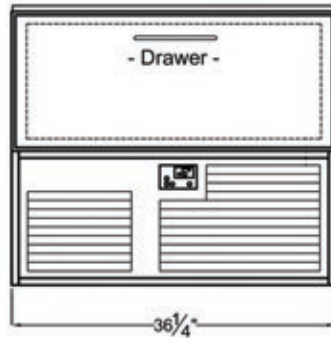
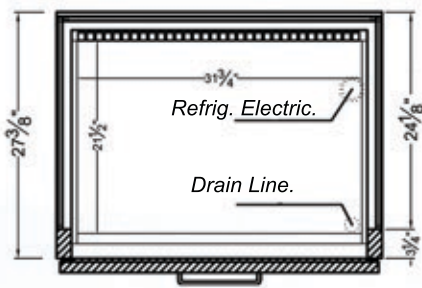
- Mirror Finished Interior Drawer and Sides
- 4 Inch Adjustable Legs with Stainless Steel Kick Plate
- 6 Inch Adjustable Legs
- Adjustable Casters
- Remote Refrigeration
- 5 Year Compressor Warranty

WHEN ORDERING, PLEASE SPECIFY:

APPLICATION: \_\_\_\_\_

REFRIGERATION TYPE: \_\_\_\_\_

## MODEL # VICD-SQ MES



Conforms to UL Standard 471,  
and NSF Standard 7; Certified  
To CSA Standard C22.2 No.120

### Electrical & Plumbing locations



| MODEL                | L       | D       | H   | COMP HP | VOLT | AMP | NEMA PLUG | WT  | REFRIG |
|----------------------|---------|---------|-----|---------|------|-----|-----------|-----|--------|
| VICD2-20-R-SC-SQ-MES | 36 1/4" | 28 7/8" | 30" | 1/4     | 115V | 5.2 | 5-15P     | 410 | 134a   |
| VICD3-20-R-SC-SQ-MES | 52 1/8" | 28 7/8" | 30" | 1/3     | 115V | 6.0 | 5-15P     | 500 | 134a   |

RPI Merchandiser is designed for use in stores where ambient temperatures and humidity do not exceed 75 Degrees Fahrenheit and 55%RH. Locate away from direct sunlight, rapid air currents and extreme temperature changes. Exposure to air currents from ceiling fans, air conditioning diffusers, ovens, etc. will disrupt the case air curtain and refrigerated zone. Refrigerated Displays are designed to maintain pre-chilled products. Adding or loading warm products above 41 Degree Fahrenheit can affect the temperature of the entire cabinet

RPI in line with it's current policy to continually improve it's product reserves the right to change materials and specifications without notice.

CALL TOLL FREE: 800-525-3692 (609-714-2330)

FAX: 609-714-2331 [www.rpiindustries.com](http://www.rpiindustries.com)

220 ROUTE 70, MEDFORD, NJ 08055