

# Ultimate

counters, carts, kiosks & more



# Table of Content



<b>1-2</b>	<b>CounterCraft Custom Serving Counters</b>
<b>3-5</b>	<b>Thermaduke Serving Counters &amp; Kiosks</b>
<b>6</b>	<b>Aeroserve Serving Counters &amp; Carts</b>
<b>7-10</b>	<b>Kiosks/Grab-n-Go/Carts</b>
<b>11-13</b>	<b>Aluminum Utility Carts/Racks</b>
<b>14</b>	<b>Countertop Equipment</b>
<b>15-16</b>	<b>Accessories &amp; Specialty Products</b>





# Custom Serving Counters



## ***Based out of Houston Texas***

CounterCraft™ is the preferred provider of unique, food service systems for K-12, Universities, B&I, and Healthcare segments alike. CounterCraft™ prides itself by providing the best in custom counters and serving systems. They do this by partnering with customers to satisfy needs and delivering solutions through superior products and services.

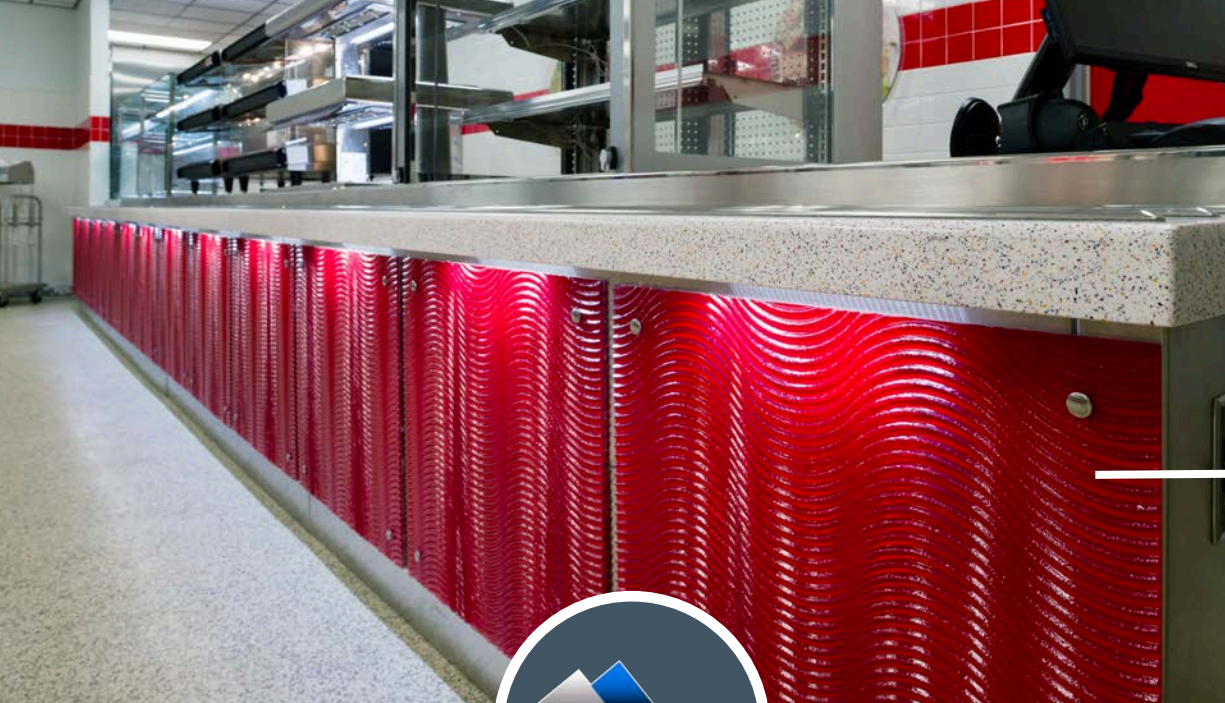


EPI  
2255 Stone Myers Pkwy, STE 105  
Grapevine, TX 76051

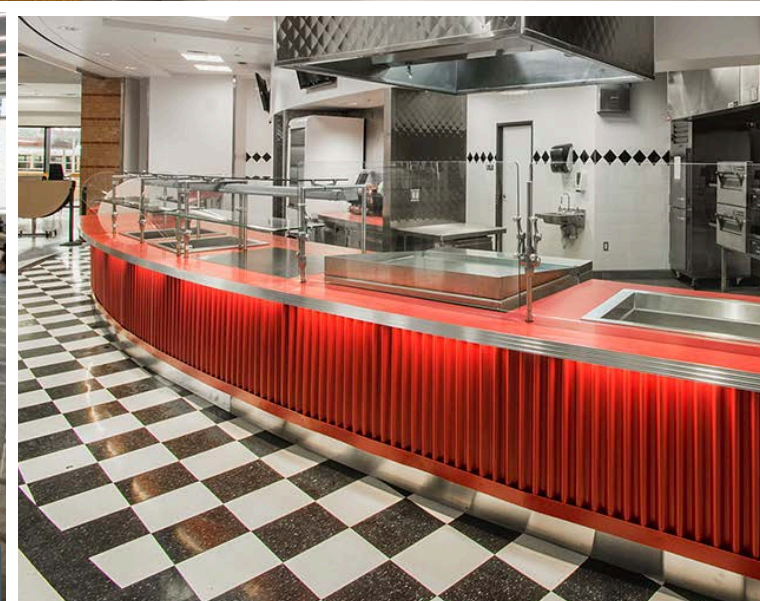
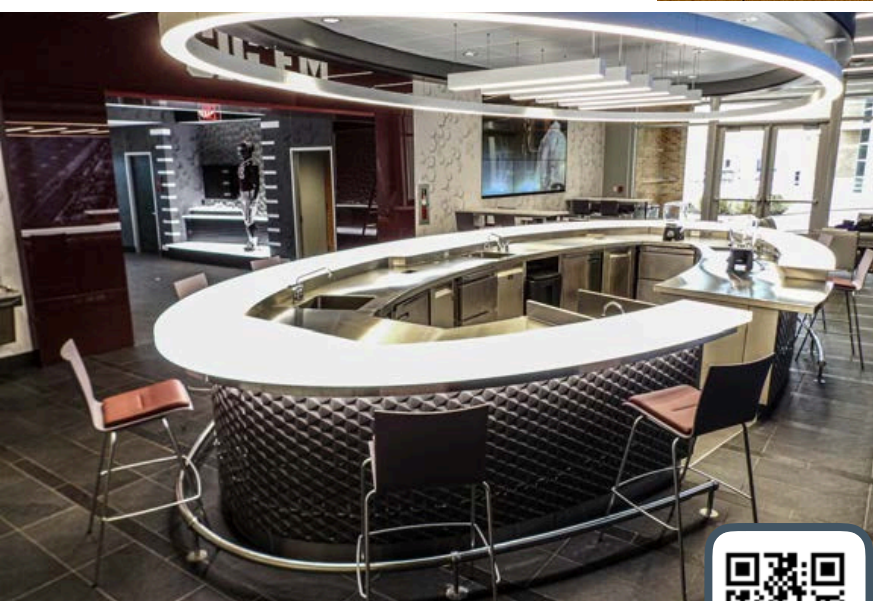


(817) 552-5500  
[www.epikitchen.com](http://www.epikitchen.com)





# Custom Serving Counters



EPI  
2255 Stone Myers Pkwy, STE 105  
Grapevine, TX 76051



(817) 552-5500  
[www.epikitchen.com](http://www.epikitchen.com)

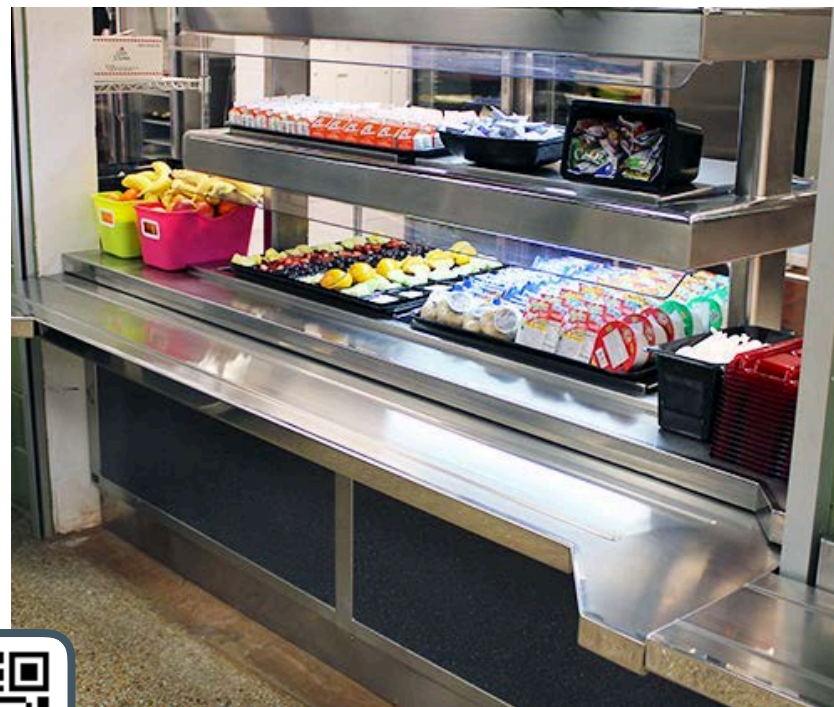


# Thurmaduke™ Serving Counters



## *Modular Efficiencies, with a Custom Feel*

The Thurmaduke serving line uses a modular body construction, while allowing all of the design and finish options of our custom serving line. Tile and fiberglass front panels along with solid surface tops and accents available. Many decor materials are available such as corian, granite, and tile, to name a few. LED lighting packages available (for food shields and front panels).







# Thurmaduke™ Serving Counters

## Kiosks



***Thurmaduke™ is our premium line of traditional modular serving systems that's durable with renewable long life.***

With Thurmaduke™ you can choose from any concept or theme. Mobile or stationary kiosk options available. Personalized custom solutions with unlimited signage and graphics options. Thurmaduke™ provides great solutions with excellent durability for your long-term, growing needs.



EPI  
2255 Stone Myers Pkwy, STE 105  
Grapevine, TX 76051



(817) 552-5500  
[www.epikitchen.com](http://www.epikitchen.com)



# Thurmaduke Serving Cart



## Hot & Cold Holding Capabilities



**Back View**  
SS Hinged  
Doors w/o  
Lock Laminate  
to Match Body

Aluminum  
Frame Flexible  
Plastic Face  
Sized For 8.5" X 11"  
Customer Insert

Custom Double  
Sided Double Tier  
SS Slanted Shelves

Cold Food Drop-In Unit

Laminate  
Veneer Front &  
Sides with  
Custom Signage  
on Front

5" Casters

Overall  
Dimensions 74"  
x 30" x 66 1/2"



Custom  
Signage  
Available

Hot Food Drop-In  
Unit Sealed  
Wells with Drains

14 GA.  
Stainless  
Steel Top

14 GA. Frame  
Supports W/20 GA.  
Stainless Steel  
Enclosure Channels,  
Body Panels and Interior  
Shelves





# Aeroserve Serving Counters



# Kiosks



***AeroServ by Duke, is the perfect blend of affordability, durability and flexible functionality.***

When you need something economical that withstands wear and tear, plus is easy-to-use. Mobile or stationary kiosk options available. Narrow body construction perfect for kids.

Placed side by side for a serving line solution or as a stand alone with signage for the perfect kiosk.

Duke is a proud supporter of TASN 2019 Counter Contest



EPI  
2255 Stone Myers Pkwy, STE 105  
Grapevine, TX 76051



(817) 552-5500  
[www.epikitchen.com](http://www.epikitchen.com)



Pick Up  
Orders Kept  
Warm

Hot and  
Cold  
Wells



# Pick-Up Stations

## Hot & Cold Holding Capabilities



Prepackaged Foods  
Hot Holding  
Duke HS2



TS400 Series  
Food Guard



Cold Well



### Online Order Pick-Up Stations

- Hot and Cold Wells on Bottom Shelf
- 16 Gauge Stainless Steel Work Table
- (3) Removable 18 Gauge Powder Coated Steel Enclosure Panels
- Push Bar for Ease of Mobility
- Customizable Graphics Available (additional charges apply)





# Mobile Eatery

## Take-Away-Cafe Cart

hallway, kiosk, breakfast in the classroom



### Take-Away-Cafe Cart



- Lightweight - Handles with Ease
- 20 GA. Stainless Steel Top
- 5" Swivel Casters with Brakes
- (3) Each Black Food Pans
- (3) Each Coldmaster® Food Pans Keeps food at or below the ServSafe® guidelines of 40°F for up to 8 hours when frozen overnight
- Top Shelf for Grab-n-Go Items

Included! - (3) Each StorPlus™ Full Size Food Pans #10202B03



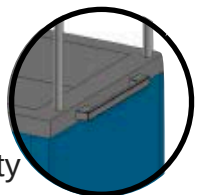
Fits - (3) Each CoolCheck™ Food Pans #CM1100C1402 (Not Included)

#### OPTIONS:

- Multiple Powder Coat Colors (Black is default color)
- Magnetic Signage



Easy Access Handle for lightweight maneuverability



EPI  
2255 Stone Myers Pkwy, STE 105  
Grapevine, TX 76051



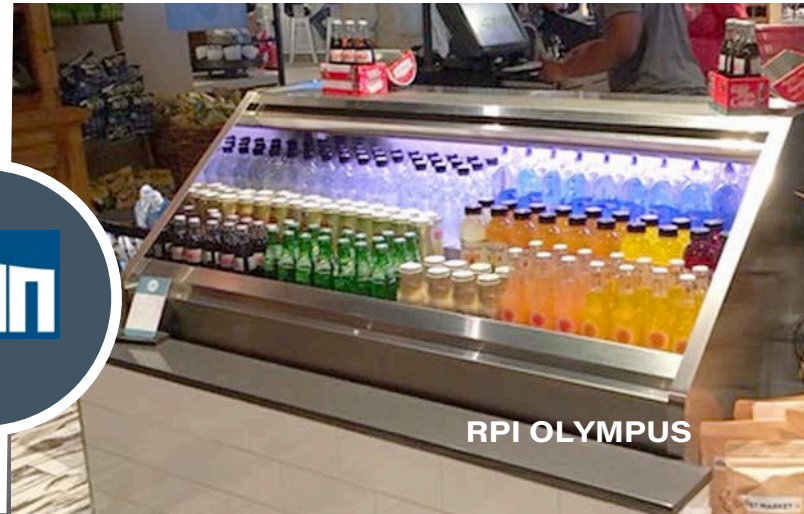
(817) 552-5500  
[www.epikitchen.com](http://www.epikitchen.com)



# Grab-n-Go Options



**RPI HOT VARIO(SHOWN  
BOTH HOT AND AMBIENT)**



**RPI OLYMPUS**



**Hatco Flav-R-  
Heated Air Curtain  
2-Go Locker System**

Model - F2G



**Hatco Glo-Ray 2-Go  
Heated Shelf**

Model - GRS2G





# Kiosk & Grab-n-Go

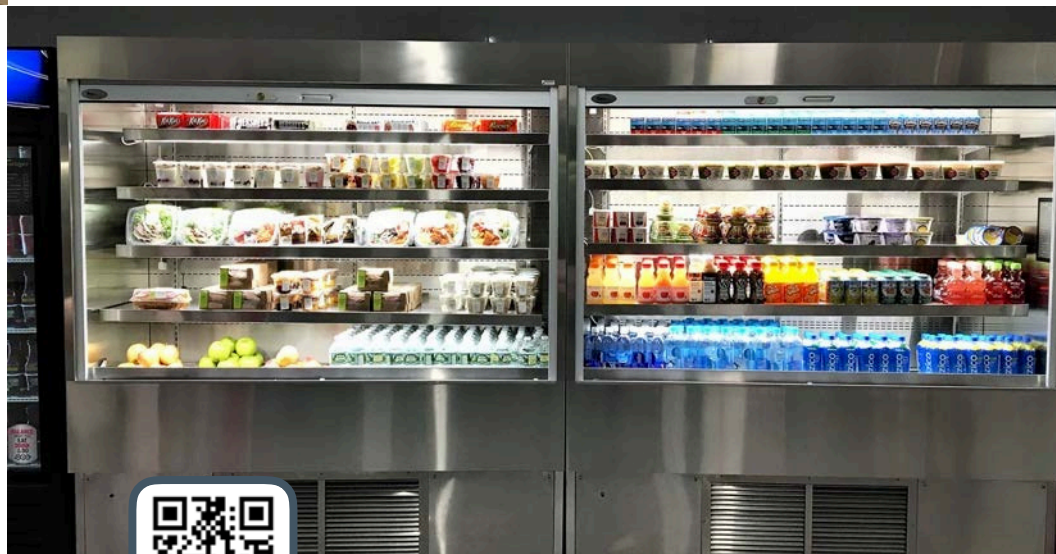


- Kiosk/Grab-n-Go can be easily added to any cafeteria/snack bar area
- Easy Access to fresh fruits, quick grab items
- Free Standing, End Caps, and Islands available depending on customers specific needs
- Customizable to match current serving system finishes and size
- Promotes last minute impulse purchases
- Easy to keep stocked



## RPI Olympus II Airscreen

- Designed with Operational Flexibility to Maximize Sales
- Integration Options - Stand Alone or Built-In
- Turbo-Chill Offers Food Safety and Peace of Mind



EPI  
2255 Stone Myers Pkwy, STE 105  
Grapevine, TX 76051



(817) 552-5500  
[www.epikitchen.com](http://www.epikitchen.com)





## Grab-N-Go Share Cart

Model# 52861

- After School Meal Delivery
- Lightweight Aluminum
- Customizable
- Lifetime Guarantee against Rust and Corrosion
- Optional Colors Available

# Share Cart

## Breakfast & Lunch in the Classroom Cart

NEWAGE  
INDUSTRIAL  
NEWAGE



Model# 52500

### Breakfast Cart

- Also Comes in a K-6 Version with Tray Slides
- Room for Laptop/Keypad Payment Services
- Holds Milk, Entrees and Fruit
- Lightweight Aluminum
- Lifetime Guarantee against Rust and Corrosion
- Made in the USA



Model# 52655

### Grab-N-Go Cart

Options:

- Badge Holder Extension Rails
- Three Side Enclosed Base
- Sign Holder Bracket





**Cooler Cart**  
Model# 96832

# Classroom / Hallway Feeding

**NEW AGE**  
INDUSTRIAL  
**NEW AGE**



**Picking Cart**  
Model# 99171

## ***New Age Offers***

Countless solutions to food handling and delivery/serving. Whether it is curbside or outdoor feeding, New Age has the cart for you. If we don't have exactly what you are looking for...we can build it to suit your needs. \*Specialty casters are available for carts being used for outdoor feeding.

## **Build Your Own Mobile Picking Cart**

*Custom Picking Carts designed by YOU, built by YOU.*

- Choose your shelf size: 24" x 36", 24"x 48" or 24" x 60"
- All adjustable shelving can be modified at any time.
- Pick your shelf design; Solid, T Bar, or HD.  
Mix them up!
- Pick your base: 4-wheel or 6-wheel zero turning.
- Choose your Options: Trash Can, Tube Handle, Document Tray, or Handle/Desktop/ Tray
- All aluminum, will never rust!
- Cart capacity 800 lbs.



Model #50315







Model# 96856



Model# 95241

# Folding Utility Cart Bun Pan

## Racks Milk Dollies

## Pan Racks

**NEW AGE**  
INDUSTRIAL  
**NEW AGE**

### ***New Age Understands...***

Transporting food from cafeteria to classroom, hallway, outdoors or dock to walk-in can be challenging. New Age offers solutions for you to get goods from point A to point B. New Age makes products that are designed for the toughest of environments. Easily customized to meet your need. If you have an idea, New Age has made an art out of customizing any product in the industry.

### **All New Age Products**

- Lightweight Aluminum
- Lifetime Guarantee against Rust and Corrosion
- Made in the USA



Model# 1622



Model# 1620



Model# 4331



# Transform Worktable/ Countertop with Tabletop Serving

## Glo-Ray® Countertop Warmer

Model# GRBW48



## Heated LED Merchandiser

Model# HXMS-36D



## Hatco Flav-R-Savor® Heated Air Curtain Cabinet

Model - FS3HAC



## Work Tables

- Adjustable Height Stainless Steel Work Tables
- Available With or Without Backsplash
- ADA/Ergonomic Height Adjustable Tables adjust from 32" to 40" height.
- Factory option to locate the crank handle at left, right or center.



EPI  
2255 Stone Myers Pkwy, STE 105  
Grapevine, TX 76051



(817) 552-5500  
[www.epikitchen.com](http://www.epikitchen.com)





## Undercounter Refrigeration

Model# TU072HR

# Serving Accessories & Add Ons

**Traulsen**

## RMC-Series Milk Cooler

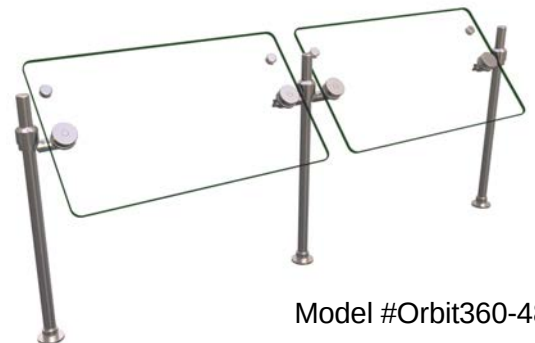
- Single & Double Access Milk Coolers
- 34", 49" & 58" lengths
- 8, 12, & 16 standard crate capacity
- Accommodates 13" x 13" or 13" x 18" crates
- 4" standard casters



## Hatco Cashier Shields



Model #EP5-36



Model #Orbit360-48



# Hand Sinks Bottle Filler



## Instant Warm Handwashing System



- Dispenses 40 twenty-second, instantly warm hand washes per hour at 105
- Sanitary, touchless design
- Costs less than \$0.011 per wash
- Hot water tank and faucet in one space saving system
- Faucet can be splash or deck mounted
- Minimal requirements: sink, cold-water line, 115-volt electrical outlet
- UL/NSF Certified



## Wall Mounted Bottle Filler Station

Model# BF-1-12



- Fully enclosed skirt with access panel.
- All 300 series stainless steel construction.
- T & S electric-eye faucets with battery backup for hand-free operation.
- Water filtration system available for filtering up to 15,000 gallons.
- Requires 120-volt electrical outlet.

## Free Standing Hand Sink

Model# HS



- 16GA Type 300 Series Stainless Steel
- Overall Size -
- 19 1/4" x 20 1/2" x 34"
- 16 3/4" High Backsplash
- Includes Splash Mounted Gooseneck Wrist Handle Faucet, S/S Soap Dispenser & Cabinet Body with Removable Front Panel
- NSF Certified



EPI  
2255 Stone Myers Pkwy, STE 105  
Grapevine, TX 76051



(817) 552-5500  
[www.epikitchen.com](http://www.epikitchen.com)





# Linelist

**3M**

**DOUGH  
XPRESS**

**NEWAGE  
INDUSTRIAL  
NEWAGE**

**SILVERKING**

**Aeroworks**

**Duke**

**Nyco**

**somat**  
waste reduction solutions

**American Panel**

**EAGLE  
GROUP**  
Profit from the Eagle Advantage

**OVENTION**  
A HATCO CORPORATION COMPANY

**Stero**

**BAXTER**

**Hatco**

**PRINCECASTLE**

**Traulsen**

**Berkel**

**HOBART**

**QUIK N'  
CRISPY**

**T&S**

**centerline**

**IBEX**

**RATIONAL**

**VITRO**  
SEATING PRODUCTS

**COOKSHACK**

**IMC/TEDDY**  
FOOD SERVICE EQUIPMENT

**RDT**  
REFRIGERATION DESIGN TECHNOLOGIES

**VULCAN**

**CounterCraft**  
A Counter Revolution

**in sink erator**

**RED GOAT DISPOSERS**

**WOLF**

**America's Proven Edge**  
**DEXTER**  
THE EDGE SINCE 1918

**MASTER**  
DISPOSERS

**RPI**



EPI  
2255 Stone Myers Pkwy  
STE 105  
Grapevine, TX 76051  
817.552.5544  
[www.epikitchen.com](http://www.epikitchen.com)

