



COMMERCIAL
DISHWASHERS



CLeN Conveyor Type Commercial Dishwasher

Wash smarter and turn loads
of dishes into savings.



advansys™





CLeN CONVEYOR TYPE DISHWASHER

Speeding up dish rooms with greater efficiency.

For medium- and high-volume operations, the performance and efficiency of your staff and commercial dishwashers can affect your entire operation. Hobart CLeN Dishwashers combine best-in-class performance and reliability with a lower total cost of ownership to keep up with busy kitchens and deliver greater lifetime value.

HOBART MAKES IT EASY

- Responsive Service Team in all 50 States
- Customized Service Programs
- Installation Programs
- 18 Month & Extended Warranty
- Financing Options with Low Monthly Payments

HOBART PERFORMANCE BENEFITS

- Cleaning Performance
- Utilities
- Chemical Optimization
- Soil Management
- Labor Management
- Life Cycle Management

Exclusive Opti-RinSe™ patented rinse-arm spray pattern creates large droplets to more efficiently sanitize the ware.

Intuitive controls make the CLeN easy to operate and configure.

Door actuated drain closure actuates drain closure automatically after closing door. Eliminates extra manual steps and ensures that closure is always in the correct position.



Ventless Operation
Eliminates the need for direct venting.



Intelligent dwell configurable NSF-rated pot and pan mode cleans stubborn, baked-on food soil.

Anti-clogging wash arms reduce cleaning time and maintain wash performance.

Intelligent delime notification is fully configurable and tells you when to delime, saving water and chemicals from over-deliming.

ASR

DWER

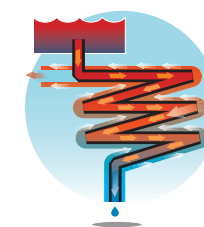
GREATEST LIFETIME VALUE

ENERGY STAR® qualified CLeN dish machines provide low total cost of ownership* for greater lifetime value.

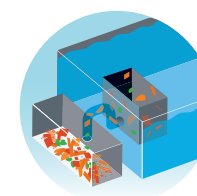
126,700 GALLONS WATER SAVED	1,140 FEWER KWH
\$1,900 COST SAVINGS	CALL FOR A FREE TCO AUDIT

*Projected annual savings from ASR and DWER on CLeN44 Advansys vs. Base running 550 racks/day using gas facility heat. Multiply over life of machine for total lifetime value.

TECHNOLOGY INNOVATIONS TO SAVE YOUR OPERATION TIME & MONEY



CUT WATER CONSUMPTION BY 90% **Drain Water Energy Recovery** reduces cold water needed for tempering by 90% and preheats incoming water for rinse, saving up to 20% on energy costs.



REDUCE WASH WATER CHANGES UP TO 50% **Automatic Soil Removal (ASR)** removes up to 80% of food soil before it reaches the pre-wash tank.



USE 30% LESS ENERGY** **Ventless Energy Recovery™** eliminates the need for direct venting while reducing energy use.

**Projected savings based upon ENERGY STAR® test data.



GET THE RIGHT SYSTEM FOR YOUR DISHROOM

STANDARD FEATURES	advansys® (ADV)	ENERGY RECOVERY (EGR)	VENTLESS (VL)	BASE (BAS)
Automatic Soil Removal (ASR)	●			
Drain Water Energy Recovery (DWER)	●	●		
Ventless Operation			●	
Intelligent Dwell NSF Pot & Pan Mode	●	●	●	●
19 1/2" Standard Opening Height	●	●	●	●
Opti-RinSe™	●	●	●	●
Cost of Ownership Savings	\$1,900*	\$1,400**	\$1,200***	

ACCESSORIES

- Direct drive unloader (not available with the Ventless models)
- Side loader (not available with the Ventless models)
- Blower-dryer (not available with the Ventless models)
- Drain water tempering kit (DWT) for Base and Ventless models (standard on Advansys and Energy Recovery models)

*Projected annual savings from ASR and DWER on CLen44 Advansys vs. Base running 550 racks/day with gas facility heat and one less tank fill/day.

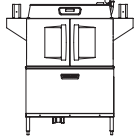
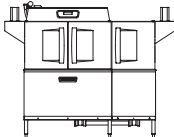
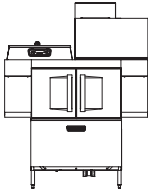
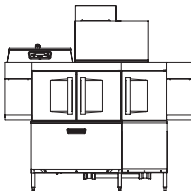
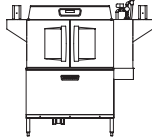
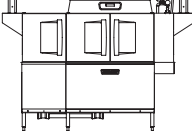
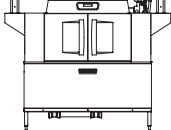
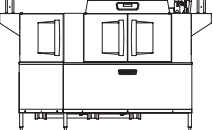
**Projected annual savings from DWER on CLen44 EGR vs. Base running 550 racks/day with gas facility heat.

***Projected annual savings from Ventless on CLen44E vs. Base running 550 racks/day with electric heat.



MODEL SIZING¹

Inch for inch, our CLen series is the most productive and accommodating conveyor dishwashers in the industry. Models available in electric, steam, and gas tank heat. Ventless electric tank heat only.

44"  Racks per hour: 202 Gallons per rack: 0.62 Tank: Single (Wash) Dimensions: 43 1/2" x 68 1/2" x 31"	66"  Racks per hour: 202 Gallons per rack: 0.62 Tank: Double (Power Scrapper & Wash) Dimensions: 65 1/2" x 68 1/2" x 31"
44"  Ventless Racks per hour: 202 Gallons per rack: 0.62 Tank: Single (Wash) Dimensions: 63 1/2" x 86 1/2" x 31" ²	66"  Ventless Racks per hour: 202 Gallons per rack: 0.62 Tank: Double (Power Scrapper & Wash) Dimensions: 85 1/2" x 86 1/2" x 31" ²
54"  Racks per hour: 245 Gallons per rack: 0.56 Tank: Single (Wash) Dimensions: 53 1/2" x 68 1/2" x 31 1/16"	76"  Racks per hour: 245 Gallons per rack: 0.56 Tank: Double (Power Scrapper & Wash) Dimensions: 76 7/16" x 68 1/2" x 31 1/16"
64"  Racks per hour: 342 Gallons per rack: 0.39 Tank: Double (Wash & Rinse) Dimensions: 63 1/2" x 68 1/2" x 31 1/16"	86"  Racks per hour: 342 Gallons per rack: 0.39 Tank: Triple (Power Scrapper, Wash & Rinse) Dimensions: 85 1/2" x 68 1/2" x 31 1/16"

¹Advansys® rack conveyor models include an external ASR basket (not shown), which adds 10" to the machine footprint. (NOTE: ASR basket does not exceed vent hood dimensions)

²Ventless models use the same tabling dimensions as base models, though come standard with 10" wide vent cowls.



Let's Talk

We're ready to help you optimize your dishroom operations.
Call 888 4HOBART and talk to one of our experts today.



www.hobartcorp.com/CLen



www.hobartcorp.com

Hobart
701 S. Ridge Ave.
Troy, Ohio 45373
1-937-332-3000

ITW FOOD EQUIPMENT GROUP

F40644 (03/20) ©2020 Hobart