



PERKS

EPI's Loyalty Rewards Program

What Is Perks

EPI's 2024 Loyalty Program was designed to reward the dealerships that support the companies we keep. Made possible with the use of 3rd party gifting source, Snappy, and targeted at dealer equipment sales, dealer leads and training.

How It Works

- To Register - Click Link or QR Code - <https://www.epikitchen.com/>
- Sell/Support EPI Brands
- Submit Supporting Documentation to Perks Portal for Points/Gifts
1 Point = 1 Dollar In Prize Value



Program Dates - Rewards Emailed At the End of Each Semester

- Semester 1 - February 1st - April 30th
- Semester 2 - May 1st - July 31st
- Semester 3 - August 1st - October 31st

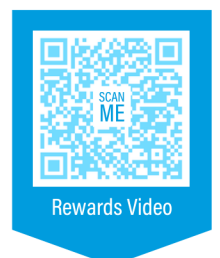
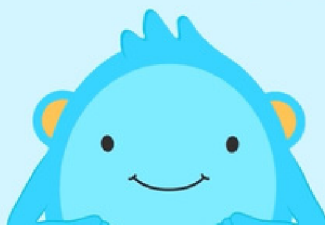
How Do I Claim My Rewards?

At the end of each semester an email will be sent to all registered, qualifying members to claim their gift.

Click video below or scan QR to see how it works.



Watch how easy it is
to claim a Snappy Gift!



EQUIPMENT AND SMALLWARES

50
POINTS

Berkel - Any 'B Series' Slicer
Centerline by Traulsen - Blast Chiller CLBS Series
Cookshack - Any Cookshack Order > \$4,000
Duke - New Stocking Dealer Steamtable Order > \$6,500 OR (4) Convection Ovens
Fisher - Stocking Order > \$2,000
Hatco - Induction Orders > \$2,500
IBEX Oven
InSinkErator - Handwashing System
Nyco - New Business > \$1,000
Quick N Crispy
Red Goat / Master Disposer - Any Model
RPI - Bandit Merchandiser Order
Vulcan - Endurance Range - Model 36S-6B
Vulcan - Fryers VK, TK, Banked GR, ER or VHG
Vulcan - Convection Ovens - Models VC4GD or VC44GD

100
POINTS

Aerowerks - Ultrawash Sink OR Tray Conveyor > \$25,000
American Panel - Blast Chiller - Models AP3-AP7
Carlisle and/or San Jamar > \$10,000
Centerline by Hobart - Edge 13 Slicer OR HMM20 Mixer
Cookshack Smoker - Model FEC-120 or Larger
Dinex - Induction Charger - Model DXDUR2083
Dinex - Any New Business > \$20,000
Hatco - Sneeze Guard Order > \$4,000
Hobart - Any Door Type Dishmachine (AM or TL)
New Age Security Cage - Model 97621
Ovention - Any Model Oven
RATIONAL -iVario Pro - Any Model
RPI - Olympus Order > \$12,000
Stero Undercounter - Model SUH-1
Vulcan - Combi Oven TCM Model
Vulcan - Steamers Models C24E05 & C24EA5

200
POINTS

Aerowerks - Any order > \$50,000
American Panel - Blast Chiller AP12 or Larger
Baxter - Any Rack Oven - Mini or Full Size
Carlisle and/or San Jamar > \$50,000
Duke Current Stocking Dealer - (40+) Steamtable Order OR (20+) Convection Oven Order
Duke Aeroserve or Thermaduke Counter > \$75,000
EPI MFG Stocking Order > \$40,000 (Any EPI MFG Qualifies)
Somat Waste System > \$25,000
Stero Door/Large Dishmachine - Model SDT, SDT3 or Order > \$25,000



Perks Submission

After Registering,
Scan QR Code to
Upload
Documentation
and Receive
Points!

All Equipment Submissions Must be Dealer Generated New Business Starting February 1st or Later and Cannot be Combined with a Stocking Order, in Addition PL and PO Numbers will Be Required

TRAININGS/SHOWS/LEADS(DEALER GENERATED)

Dealer Attends EPI Sponsored Event
(50 Points for dealer PLUS 50 points for every end-user attendee)
Documentation Required-RSVP Email Confirmation
Dealer Brings End-User to EPI SpeCenter for one-on-one tour/training

50
POINTS

Lead - Kitchen Equipment Design Layout (Design must include 5+ pieces)
Required Documentation - Drawing with Title Block
Lead - Dealer Rep Brings New Chain Account (Min 10 Locations) to EPI Showroom for Tour or Tandem Visit with EPI Sales Team
Required Documentation - Email Confirmation
Lead - Take EPI Rep on Dealer Generated End-User Call that Specs EPI Equipment \$15,000+
Required Documentation - EPI Quote

100
POINTS

Lead - Full Wrap on Contract or Design Job (Min of four product categories offered and tracked by EPI)
Required Documentation - Drawing with Title Block OR Correspondence with Negotiation Commitment
Lead - Hospital Dishroom Design > \$75K (Must include conveyor system)
Required Documentation - Factory Drawing OR Factory Quote
Lead - Kitchen Layout Design of 10+ pieces (Equipment does not have to be on Perks equipment list to qualify)
Required Documentation - Drawing with Title Block OR Dealer Specification with EPI MFG included

200
POINTS

All Equipment Submissions Must be Dealer Generated New Business Starting February 1st or Later and Cannot be Combined with a Stocking Order, in Addition PL and PO Numbers will Be Required

Scan QR Code to upload PO and receive points!



Perks Submission

PROGRAM RULES

- Participants must register to participate at <https://www.epikitchen.com/perks> or scan code
- Program Dates - February 1st - October 31st
- Upon registering, member will receive confirmation email.
- Any Perks Point submission should be based upon activities and/or orders started February 1st or later.
- All Equipment Submissions Must be Dealer Generated New Business Quoted March 1st or Later and Cannot be Combined with a Stocking Order
- For equipment and smallwares submissions, up to five equipment/smallwares options(including options for multiple quantities) can be entered on same PO upload. If more than 5 pieces of equipment are on same PO, then PO can be uploaded again to support additional submissions.
- All Submissions are at the Discretion of EPI Management
- Prizes/Gifts Must Be Claimed Within 6 Weeks After Receiving Snappy Email
- Dealer may be asked to provide tax information if gifting exceeds allowed amount by IRS
- For Questions - epiperks@epikitchen.com or scan code